

## KGF Rabbit mAb

Catalog No: #52383

Package Size: #52383-1 50ul #52383-2 100ul

Orders: [order@signalwayantibody.com](mailto:order@signalwayantibody.com)Support: [tech@signalwayantibody.com](mailto:tech@signalwayantibody.com)

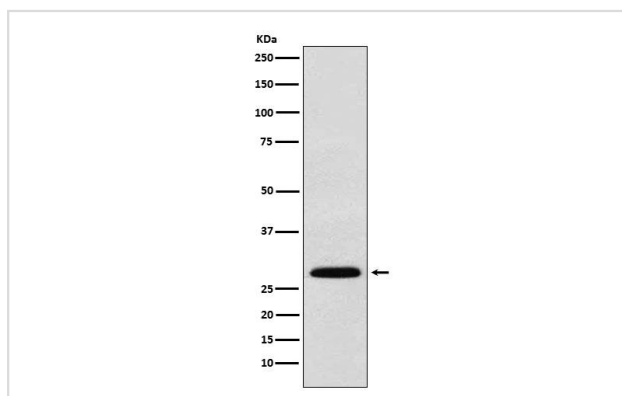
## Description

Product Name	KGF Rabbit mAb
Clone No.	S07-5C6
Isotype	Rabbit IgG
Purification	Affinity-chromatography
Applications	WB
Species Reactivity	Human,Mouse,Rat
Immunogen Description	A synthetic peptide of human KGF
Conjugates	Unconjugated
Modification	Unmodification
Other Names	KGF; HBGf-7
Accession No.	Swiss-Prot:P21781 GeneID:2252
Uniprot	P21781
GeneID	2252
Calculated MW	Calculated MW: 23 kDa; Observed MW: 28 kDa
Formulation	Rabbit IgG in phosphate buffered saline , pH 7.4, 150mM NaCl, 0.02% sodium azide and 50% glycerol.
Storage	Store at 4°C short term. Aliquot and store at -20°C long term. Avoid freeze/thaw cycles.

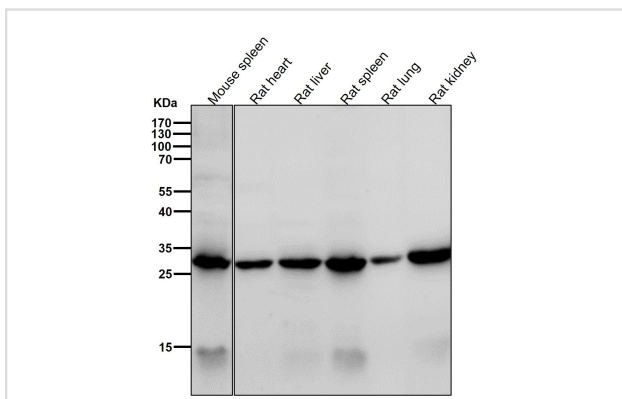
## Application Details

WB 1:500~1:2000

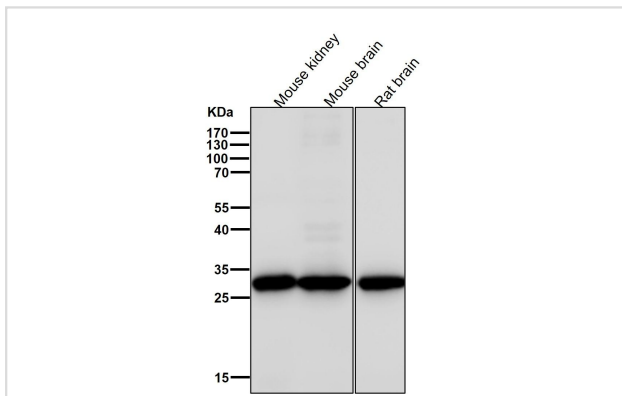
## Images



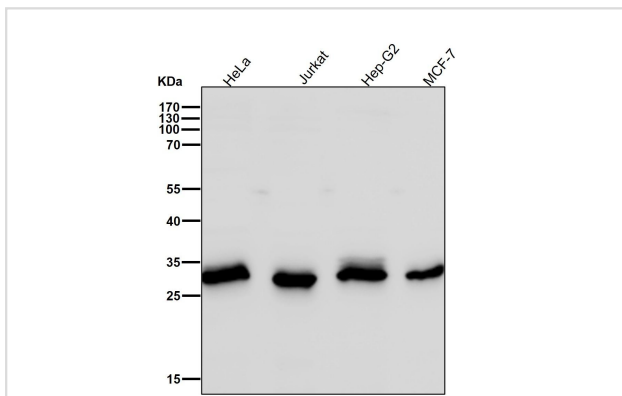
Western blot analysis of KGF expression in 293T cell lysate.



All lanes use the Antibody at 1:1K dilution for 1 hour at room temperature.



All lanes use the Antibody at 1:1K dilution for 1 hour at room temperature.



All lanes use the Antibody at 1:1K dilution for 1 hour at room temperature.

## Background

Growth factor active on keratinocytes. Possible major paracrine effector of normal epithelial cell proliferation.

Note: This product is for in vitro research use only