

KIFC1 Rabbit mAb

Catalog No: #52385

Package Size: #52385-1 50ul #52385-2 100ul

Orders: order@signalwayantibody.com

Support: tech@signalwayantibody.com

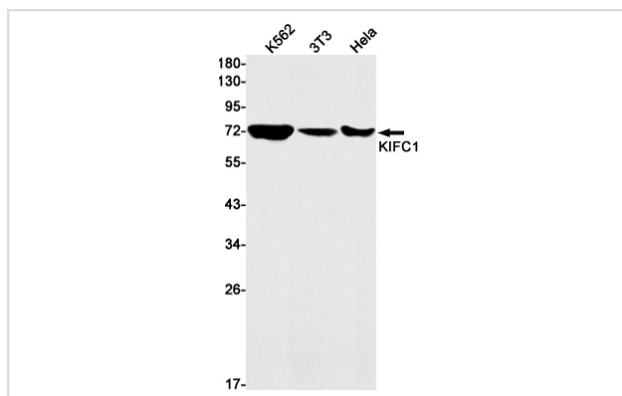
Description

Product Name	KIFC1 Rabbit mAb
Host Species	Recombinant Rabbit
Clonality	Monoclonal antibody
Clone No.	S03-3E4
Isotype	Rabbit IgG
Purification	Affinity Purified
Applications	WB IHC IF
Species Reactivity	Human
Immunogen Description	A synthetic peptide of human KIFC1
Conjugates	Unconjugated
Modification	Unmodification
Other Names	HSET; KNSL2
Accession No.	Swiss-Prot:Q9BW19GenelD:3833
Uniprot	Q9BW19
GenelD	3833
Calculated MW	Calculated MW: 74 kDa; Observed MW: 74 kDa
Concentration	0.3 mg/ml
Formulation	50mM Tris-Glycine(pH 7.4), 0.15M NaCl, 40% Glycerol, 0.01% Sodium azide and 0.05% BSA
Storage	Store at 4°C short term. Aliquot and store at -20°C long term. Avoid freeze/thaw cycles.

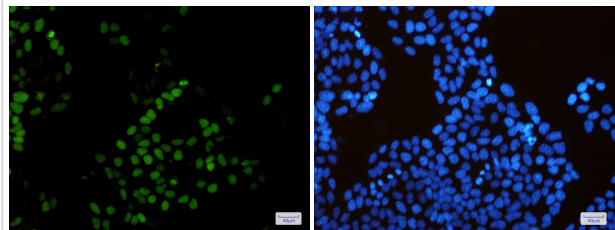
Application Details

WB: 1/2000-1/10000; IHC: 1/20; ICC/IF: 1/20;

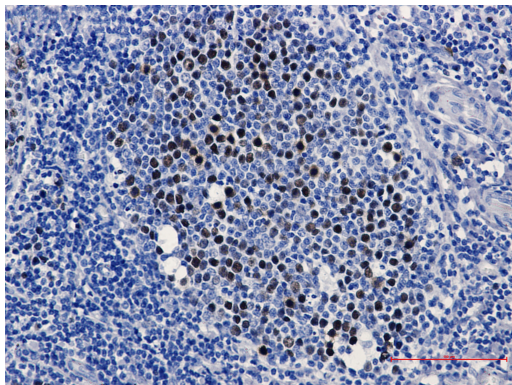
Images



Western blot detection of KIFC1 in K562,3T3,HeLa cell lysates using KIFC1 Rabbit mAb(1:1000 diluted).Predicted band size:74kDa.Observed band size:74kDa.



Immunofluorescence of KIFC1(green) in HeLa cells using KIFC1 Rabbit mAb at dilution 1/50, and DAPI(blue)



Immunohistochemistry of KIFC1 in paraffin-embedded Human tonsil using KIFC1 Rabbit mAb at dilution 1/2

Background

Swiss-Prot Acc.Q9BW19.Minus end-directed microtubule-dependent motor required for bipolar spindle formation (PubMed:15843429). May contribute to movement of early endocytic vesicles . Regulates cilium formation and structure .

Note: This product is for in vitro research use only