

L1CAM Rabbit mAb

Catalog No: #52389



Package Size: #52389-1 50ul #52389-2 100ul

Orders: order@signalwayantibody.com  
Support: tech@signalwayantibody.com

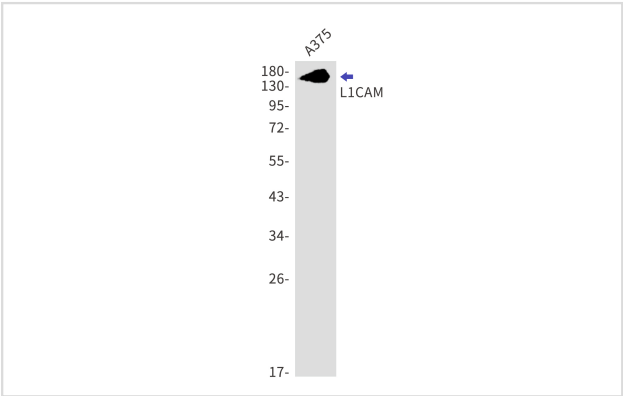
Description

Product Name	L1CAM Rabbit mAb
Host Species	Recombinant Rabbit
Clonality	Monoclonal antibody
Clone No.	S04-8I3
Isotype	Rabbit IgG
Purification	Affinity Purified
Applications	WB
Species Reactivity	Human
Immunogen Description	Recombinant protein of human L1CAM
Conjugates	Unconjugated
Modification	Unmodification
Other Names	S10; HSAS; MASA; MIC5; SPG1; CAML1; CD171; HSAS1; N-CAML1; NCAM-L1; N-CAM-L1
Accession No.	Swiss-Prot:P32004GenelD:3897
Uniprot	P32004
GenelD	3897
Calculated MW	Calculated MW: 140 kDa; Observed MW: 140 kDa
Concentration	0.3 mg/ml
Formulation	50mM Tris-Glycine(pH 7.4), 0.15M NaCl, 40% Glycerol, 0.01% Sodium azide and 0.05% BSA
Storage	Store at 4°C short term. Aliquot and store at -20°C long term. Avoid freeze/thaw cycles.

Application Details

WB: 1/1000;

Images



Western blot detection of L1CAM in A375 using L1CAM Rabbit mAb.Predicted band size:140kDa.Observed band size:140kDa.

## Background

---

Swiss-Prot Acc.P32004. Neural cell adhesion molecule involved in the dynamics of cell adhesion and in the generation of transmembrane signals at tyrosine kinase receptors. During brain development, critical in multiple processes, including neuronal migration, axonal growth and fasciculation, and synaptogenesis. In the mature brain, plays a role in the dynamics of neuronal structure and function, including synaptic plasticity.

---

Note: This product is for in vitro research use only