

## Lactate Dehydrogenase C Rabbit mAb

Catalog No: #52390

Package Size: #52390-1 50ul #52390-2 100ul

Orders: order@signalwayantibody.com

Support: tech@signalwayantibody.com

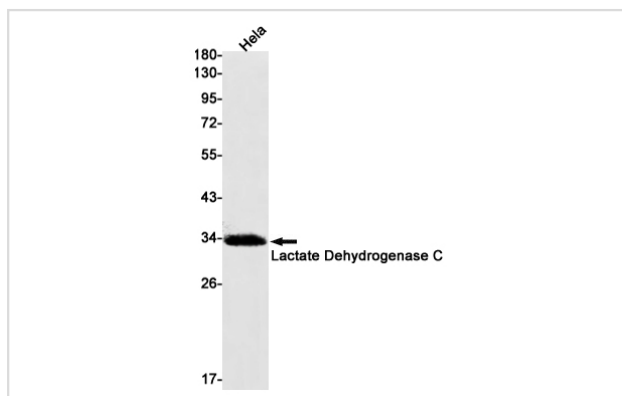
## Description

Product Name	Lactate Dehydrogenase C Rabbit mAb
Host Species	Recombinant Rabbit
Clonality	Monoclonal antibody
Clone No.	S04-9G2
Isotype	Rabbit IgG
Purification	Affinity Purified
Applications	WB
Species Reactivity	Human
Immunogen Description	A synthetic peptide of human Lactate Dehydrogenase C
Conjugates	Unconjugated
Modification	Unmodification
Other Names	CT32; LDH3; LDHX
Accession No.	Swiss-Prot:P07864GenelD:3948
Uniprot	P07864
GenelD	3948
Calculated MW	Calculated MW: 36 kDa; Observed MW: 36 kDa
Concentration	0.3 mg/ml
Formulation	50mM Tris-Glycine(pH 7.4), 0.15M NaCl, 40% Glycerol, 0.01% Sodium azide and 0.05% BSA
Storage	Store at 4°C short term. Aliquot and store at -20°C long term. Avoid freeze/thaw cycles.

## Application Details

WB: 1/1000-1/5000

## Images



Western blot detection of Lactate Dehydrogenase C in HeLa cell lysates using Lactate Dehydrogenase C Rabbit mAb(1:1000 diluted). Predicted band size:36kDa.Observed band size:36kDa.

## Background

---

Swiss-Prot Acc.P07864.Possible role in sperm motility.

---

Note: This product is for in vitro research use only