

Lamin B2 Rabbit mAb

Catalog No: #52392

Package Size: #52392-1 50ul #52392-2 100ul

Orders: order@signalwayantibody.com

Support: tech@signalwayantibody.com

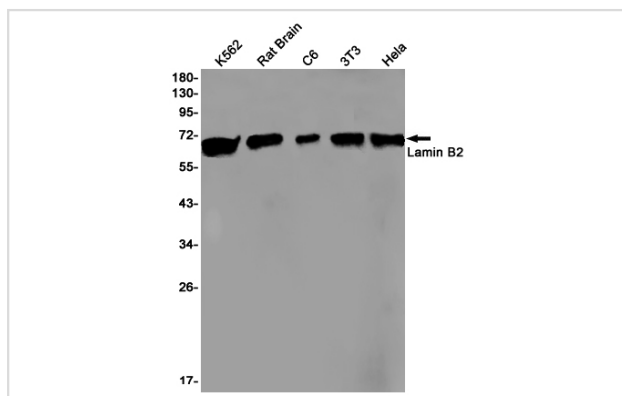
Description

Product Name	Lamin B2 Rabbit mAb
Host Species	Recombinant Rabbit
Clonality	Monoclonal antibody
Clone No.	S02-917
Isotype	Rabbit IgG
Purification	Affinity Purified
Applications	WB
Species Reactivity	Human,Mouse,Rat
Immunogen Description	A synthetic peptide of human Lamin B2
Conjugates	Unconjugated
Modification	Unmodification
Other Names	EPM9; LMN2; LAMB2
Accession No.	Swiss-Prot:Q03252GeneID:84823
Uniprot	Q03252
GeneID	84823
Calculated MW	Calculated MW: 68 kDa; Observed MW: 68 kDa
Concentration	0.3 mg/ml
Formulation	50mM Tris-Glycine(pH 7.4), 0.15M NaCl, 40% Glycerol, 0.01% Sodium azide and 0.05% BSA
Storage	Store at 4°C short term. Aliquot and store at -20°C long term. Avoid freeze/thaw cycles.

Application Details

WB: 1/2000;

Images



Western blot detection of Lamin B2 in K562,Rat Brain,C6,3T3,HeLa cell lysates using Lamin B2 Rabbit mAb(1:1000 diluted).Predicted band size:68kDa.Observed band size:68kDa.

Background

Swiss-Prot Acc.Q03252.Lamins are components of the nuclear lamina, a fibrous layer on the nucleoplasmic side of the inner nuclear membrane, which is thought to provide a framework for the nuclear envelope and may also interact with chromatin.MiscellaneousThe structural integrity of the lamina is strictly controlled by the cell cycle, as seen by the disintegration and formation of the nuclear envelope in prophase and telophase, respectively.

Note: This product is for in vitro research use only