

LAMP1 Rabbit mAb

Catalog No: #52393

Package Size: #52393-1 50ul #52393-2 100ul

Orders: order@signalwayantibody.com

Support: tech@signalwayantibody.com

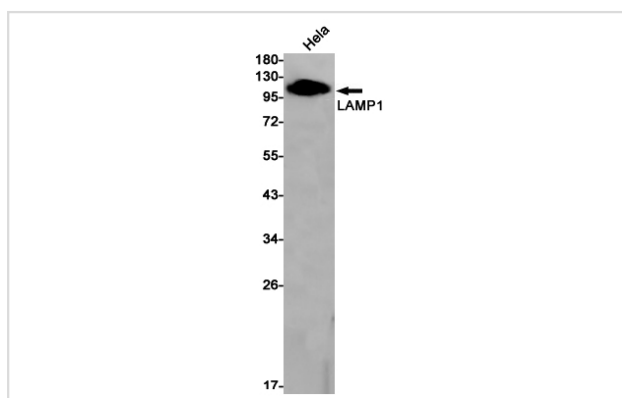
Description

Product Name	LAMP1 Rabbit mAb
Host Species	Recombinant Rabbit
Clonality	Monoclonal antibody
Clone No.	S05-7D4
Isotype	Rabbit IgG
Purification	Affinity Purified
Applications	WB IHC
Species Reactivity	Human
Immunogen Description	A synthetic peptide of human LAMP1
Conjugates	Unconjugated
Modification	Unmodification
Other Names	LAMPA; CD107a; LGP120
Accession No.	Swiss-Prot:P11279GenelD:3916
Uniprot	P11279
GenelD	3916
Calculated MW	Calculated MW: 45 kDa; Observed MW: 90-120 kDa
Concentration	0.3 mg/ml
Formulation	50mM Tris-Glycine(pH 7.4), 0.15M NaCl, 40% Glycerol, 0.01% Sodium azide and 0.05% BSA
Storage	Store at 4°C short term. Aliquot and store at -20°C long term. Avoid freeze/thaw cycles.

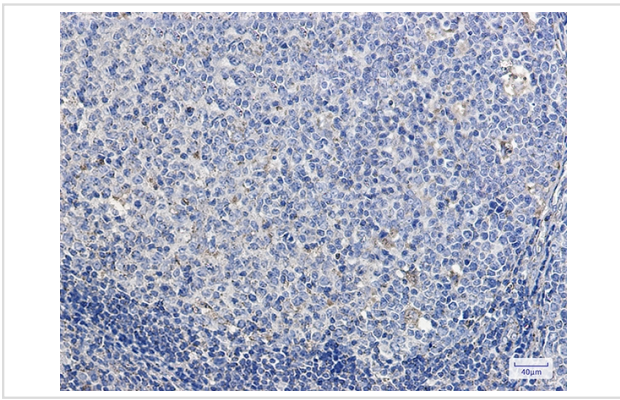
Application Details

WB: 1/1000; IHC: 1/50

Images



Western blot detection of LAMP1 in HeLa cell lysates using LAMP1 Rabbit mAb(1:1000 diluted). Predicted band size:45kDa.Observed band size:90-120kDa.



Immunohistochemistry of LAMP1 in paraffin-embedded Human tonsil using LAMP1 Rabbit mAb at dilution 1/50

Background

Swiss-Prot Acc.P11279.Presents carbohydrate ligands to selectins. Also implicated in tumor cell metastasis.Acts as a receptor for Lassa virus protein.

Note: This product is for in vitro research use only