

## Legumain Rabbit mAb

Catalog No: #52395

Package Size: #52395-1 50ul #52395-2 100ul

Orders: order@signalwayantibody.com

Support: tech@signalwayantibody.com

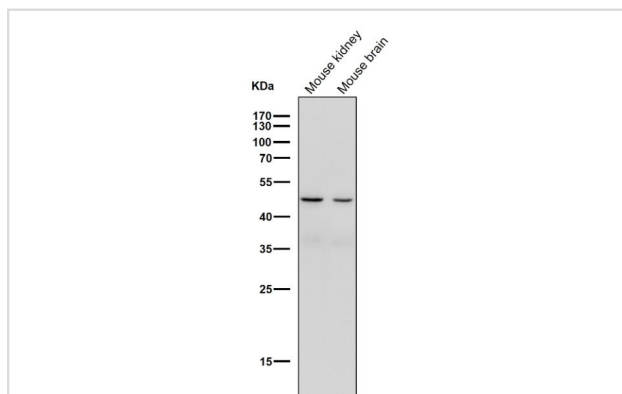
## Description

Product Name	Legumain Rabbit mAb
Clone No.	S06-7G1
Isotype	Rabbit IgG
Purification	Affinity-chromatography
Applications	WB
Species Reactivity	Human,Mouse,Rat
Immunogen Description	A synthesized peptide derived from human Legumain
Conjugates	Unconjugated
Modification	Unmodification
Other Names	AEP; LGMN1; PRSC1
Accession No.	Swiss-Prot:Q99538GeneID:5641
Uniprot	Q99538
GeneID	5641
Calculated MW	Calculated MW: 49 kDa; Observed MW: 57,49,36 kDa
Concentration	0.3 mg/ml
Formulation	Rabbit IgG in 10mM phosphate buffered saline , pH 7.4, 150mM sodium chloride, 0.05% BSA, 0.02% sodium azide and 50% glycerol.
Storage	Store at 4°C short term. Aliquot and store at -20°C long term. Avoid freeze/thaw cycles.

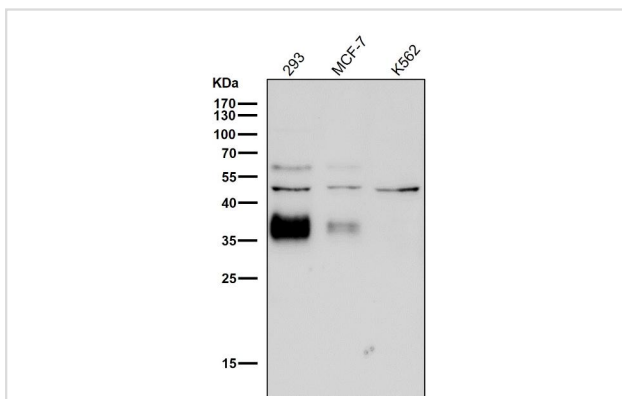
## Application Details

WB 1:1000-1:2000

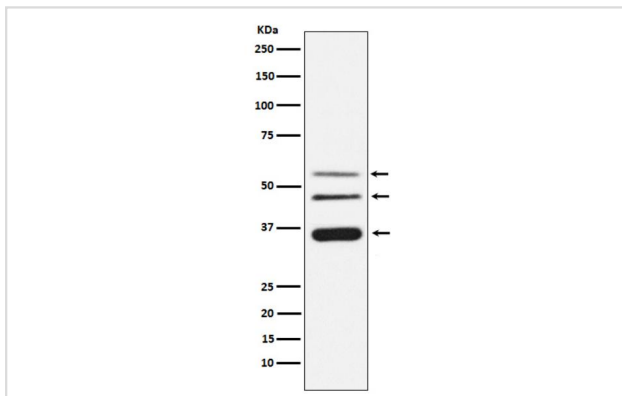
## Images



All lanes use the Antibody at 1:2K dilution for 1 hour at room temperature.



All lanes use the Antibody at 1:2K dilution for 1 hour at room temperature.



Western blot analysis of Legumain expression in HeLa cell lysate.

## Background

Swiss-Prot Acc.Q99538.Has a strict specificity for hydrolysis of asparaginyl bonds. Can also cleave aspartyl bonds slowly, especially under acidic conditions. Required for normal lysosomal protein degradation in renal proximal tubules. Required for normal degradation of internalized EGFR. Plays a role in the regulation of cell proliferation via its role in EGFR degradation . May be involved in the processing of proteins for MHC class II antigen presentation in the lysosomal/endosomal system.

Note: This product is for in vitro research use only