

LRRC15 Rabbit mAb

Catalog No: #52401

Package Size: #52401-1 50ul #52401-2 100ul

Orders: order@signalwayantibody.com

Support: tech@signalwayantibody.com

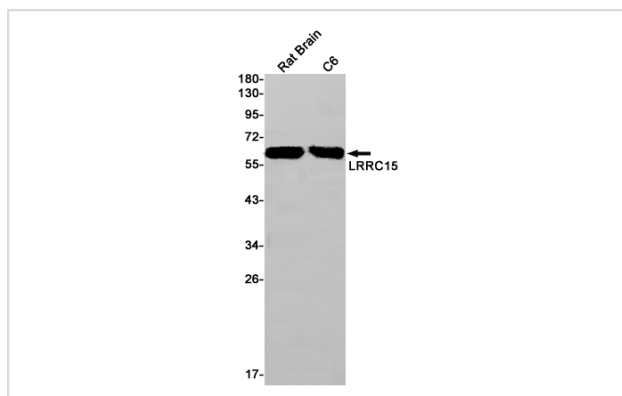
Description

Product Name	LRRC15 Rabbit mAb
Host Species	Recombinant Rabbit
Clonality	Monoclonal antibody
Clone No.	S04-3E9
Isotype	Rabbit IgG
Purification	Affinity Purified
Applications	WB
Species Reactivity	Human,Mouse,Rat
Immunogen Description	A synthetic peptide of human LRRC15
Conjugates	Unconjugated
Modification	Unmodification
Other Names	LIB
Accession No.	Swiss-Prot:Q8TF66GeneID:131578
Uniprot	Q8TF66
GeneID	131578
Calculated MW	Calculated MW: 64 kDa; Observed MW: 64 kDa
Concentration	0.3 mg/ml
Formulation	50mM Tris-Glycine(pH 7.4), 0.15M NaCl, 40% Glycerol, 0.01% Sodium azide and 0.05% BSA
Storage	Store at 4°C short term. Aliquot and store at -20°C long term. Avoid freeze/thaw cycles.

Application Details

WB: 1/1000

Images



Western blot detection of LRRC15 in Rat Brain,C6 cell lysates using LRRC15 Rabbit mAb(1:1000 diluted).Predicted band size:64kDa.Observed band size:64kDa.

Background

Swiss-Prot Acc.Q8TF66.Leucine-rich repeat-containing protein 15

Note: This product is for in vitro research use only