

Mannose Receptor Rabbit mAb

Catalog No: #52405

Package Size: #52405-1 50ul #52405-2 100ul

Orders: order@signalwayantibody.com

Support: tech@signalwayantibody.com

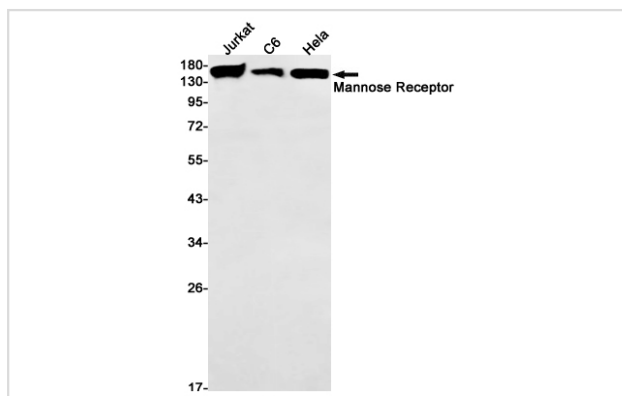
Description

Product Name	Mannose Receptor Rabbit mAb
Host Species	Recombinant Rabbit
Clonality	Monoclonal antibody
Clone No.	S06-511
Isotype	Rabbit IgG
Purification	Affinity Purified
Applications	WB
Species Reactivity	Human
Immunogen Description	A synthetic peptide of human Mannose Receptor
Conjugates	Unconjugated
Modification	Unmodification
Other Names	MMR; hMR; CD206; MRC1L1; CLEC13D; CLEC13DL; bA541119.1
Accession No.	Swiss-Prot:P22897GenelD:4360
Uniprot	P22897
GenelD	4360
Calculated MW	Calculated MW: 166 kDa; Observed MW: 166 kDa
Concentration	0.3 mg/ml
Formulation	50mM Tris-Glycine(pH 7.4), 0.15M NaCl, 40% Glycerol, 0.01% Sodium azide and 0.05% BSA
Storage	Store at 4°C short term. Aliquot and store at -20°C long term. Avoid freeze/thaw cycles.

Application Details

WB: 1/1000;

Images



Western blot detection of Mannose Receptor in Jurkat,C6,HeLa cell lysates using Mannose Receptor Rabbit mAb(1:1000 diluted).Predicted band size:166kDa.Observed band size:166kDa.

Background

Swiss-Prot Acc.P22897.Mediates the endocytosis of glycoproteins by macrophages. Binds both sulfated and non-sulfated polysaccharide chains.(Microbial infection) Acts as phagocytic receptor for bacteria, fungi and other pathogens.(Microbial infection) Acts as a receptor for Dengue virus envelope protein E.

Note: This product is for in vitro research use only