

MDH2 Rabbit mAb

Catalog No: #52409

Package Size: #52409-1 50ul #52409-2 100ul

Orders: order@signalwayantibody.com

Support: tech@signalwayantibody.com

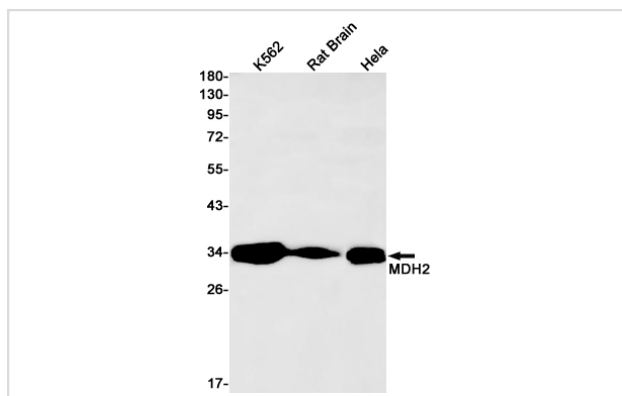
Description

Product Name	MDH2 Rabbit mAb
Host Species	Recombinant Rabbit
Clonality	Monoclonal antibody
Clone No.	S06-4E2
Isotype	Rabbit IgG
Purification	Affinity Purified
Applications	WB IHC
Species Reactivity	Human,Mouse,Rat
Immunogen Description	A synthetic peptide of human MDH2
Conjugates	Unconjugated
Modification	Unmodification
Other Names	MDH; MOR1; M-MDH; EIEE51; MGC:3559
Accession No.	Swiss-Prot:P40926GenelD:4191
Uniprot	P40926
GenelD	4191
Calculated MW	Calculated MW: 36 kDa; Observed MW: 36 kDa
Concentration	0.3 mg/ml
Formulation	50mM Tris-Glycine(pH 7.4), 0.15M NaCl, 40% Glycerol, 0.01% Sodium azide and 0.05% BSA
Storage	Store at 4°C short term. Aliquot and store at -20°C long term. Avoid freeze/thaw cycles.

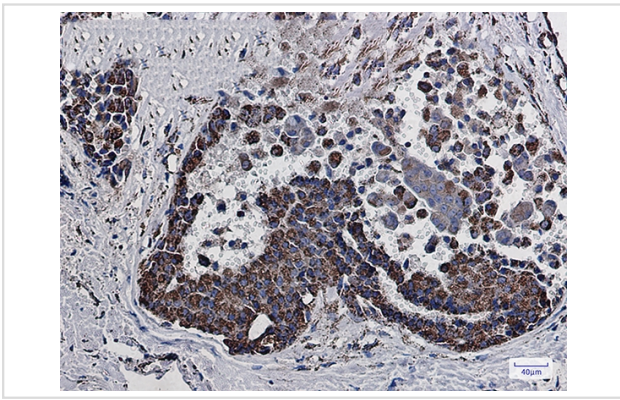
Application Details

WB: 1/2000-1/10000; IHC: 1/20;

Images



Western blot detection of MDH2 in K562,Rat Brain,Hela cell lysates using MDH2 Rabbit mAb(1:1000 diluted).Predicted band size:36kDa.Observed band size:36kDa.



Immunohistochemistry of MDH2 in paraffin-embedded Human breast cancer tissue using MDH2 Rabbit mAb at dilution 1/20

Background

Swiss-Prot Acc.P40926.Malate dehydrogenase, mitochondrial

Note: This product is for in vitro research use only