

ME2 Rabbit mAb

Catalog No: #52411

Package Size: #52411-1 50ul #52411-2 100ul

Orders: order@signalwayantibody.com

Support: tech@signalwayantibody.com

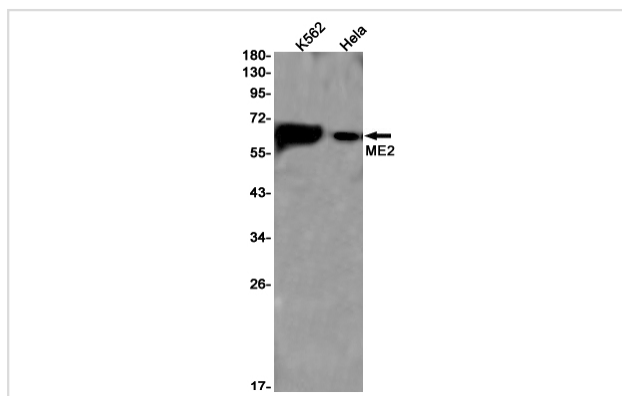
Description

Product Name	ME2 Rabbit mAb
Host Species	Recombinant Rabbit
Clonality	Monoclonal antibody
Clone No.	S04-712
Isotype	Rabbit IgG
Purification	Affinity Purified
Applications	WB IF
Species Reactivity	Human
Immunogen Description	A synthetic peptide of human ME2
Conjugates	Unconjugated
Modification	Unmodification
Other Names	ODS1
Accession No.	Swiss-Prot:P23368GenelD:4200
Uniprot	P23368
GenelD	4200
Calculated MW	Calculated MW: 65 kDa; Observed MW: 65 kDa
Concentration	0.3 mg/ml
Formulation	50mM Tris-Glycine(pH 7.4), 0.15M NaCl, 40% Glycerol, 0.01% Sodium azide and 0.05% BSA
Storage	Store at 4°C short term. Aliquot and store at -20°C long term. Avoid freeze/thaw cycles.

Application Details

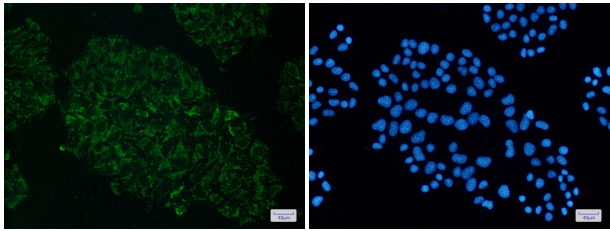
WB: 1/1000-1/5000; ICC/IF: 1/20-1/50

Images



Western blot detection of ME2 in K562, HeLa cell lysates using ME2 Rabbit mAb (1:1000 diluted). Predicted band size: 65 kDa. Observed band size: 65 kDa.

Immunofluorescence of ME2(green) in Hela cells using ME2 Rabbit mAb at dilution 1/50, and DAPI(blue)



Background

Swiss-Prot Acc.P23368.Miscellaneous This isoenzyme can also use NADP+ but is more effective with NAD+.

Note: This product is for in vitro research use only