

Metabotropic Glutamate Receptor 2 Rabbit mAb

Catalog No: #52415

Package Size: #52415-1 50ul #52415-2 100ul

Orders: order@signalwayantibody.com

Support: tech@signalwayantibody.com

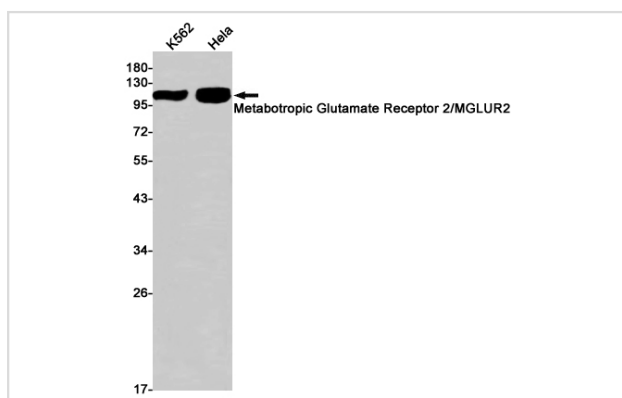
Description

Product Name	Metabotropic Glutamate Receptor 2 Rabbit mAb
Host Species	Recombinant Rabbit
Clonality	Monoclonal antibody
Clone No.	S04-2D1
Isotype	Rabbit IgG
Purification	Affinity Purified
Applications	WB
Species Reactivity	Human,Mouse,Rat
Immunogen Description	A synthetic peptide of human Metabotropic Glutamate Receptor 2
Conjugates	Unconjugated
Modification	Unmodification
Other Names	GLUR2; mGlu2; GPRC1B; MGLUR2
Accession No.	Swiss-Prot:Q14416GeneID:2912
Uniprot	Q14416
GeneID	2912
Calculated MW	Calculated MW: 99 kDa; Observed MW: 99 kDa
Concentration	0.3 mg/ml
Formulation	50mM Tris-Glycine(pH 7.4), 0.15M NaCl, 40% Glycerol, 0.01% Sodium azide and 0.05% BSA
Storage	Store at 4°C short term. Aliquot and store at -20°C long term. Avoid freeze/thaw cycles.

Application Details

WB: 1/2000-1/10000;

Images



Western blot detection of Metabotropic Glutamate Receptor 2 in K562, HeLa cell lysates using Metabotropic Glutamate Receptor 2 Rabbit mAb (1:1000 diluted). Predicted band size: 99kDa. Observed band size: 99kDa.

Background

Swiss-Prot Acc.Q14416.G-protein coupled receptor for glutamate. Ligand binding causes a conformation change that triggers signaling via guanine nucleotide-binding proteins (G proteins) and modulates the activity of down-stream effectors, such as adenylate cyclase. Signaling inhibits adenylate cyclase activity. May mediate suppression of neurotransmission or may be involved in synaptogenesis or synaptic stabilization.

Note: This product is for in vitro research use only