

Methylmalonyl Coenzyme A mutase Rabbit mAb

Catalog No: #52416

Package Size: #52416-1 50ul #52416-2 100ul

Orders: order@signalwayantibody.com

Support: tech@signalwayantibody.com

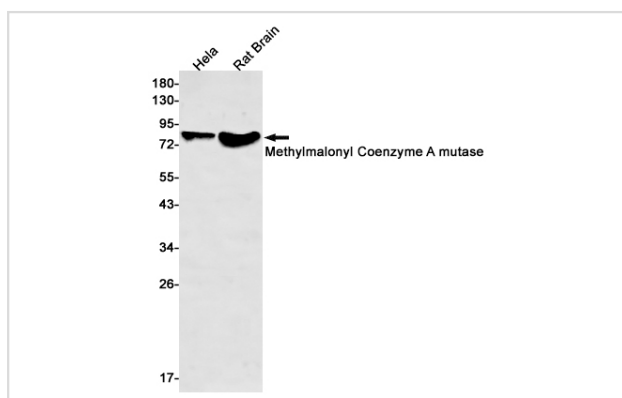
Description

Product Name	Methylmalonyl Coenzyme A mutase Rabbit mAb
Host Species	Recombinant Rabbit
Clonality	Monoclonal antibody
Clone No.	S05-3G4
Isotype	Rabbit IgG
Purification	Affinity Purified
Applications	WB IHC
Species Reactivity	Human,Mouse,Rat
Immunogen Description	A synthetic peptide of human Methylmalonyl Coenzyme A mutase
Conjugates	Unconjugated
Modification	Unmodification
Other Names	MCM
Accession No.	Swiss-Prot:P22033GenelD:4594
Uniprot	P22033
GenelD	4594
Calculated MW	Calculated MW: 83 kDa; Observed MW: 83 kDa
Concentration	0.3 mg/ml
Formulation	50mM Tris-Glycine(pH 7.4), 0.15M NaCl, 40% Glycerol, 0.01% Sodium azide and 0.05% BSA
Storage	Store at 4°C short term. Aliquot and store at -20°C long term. Avoid freeze/thaw cycles.

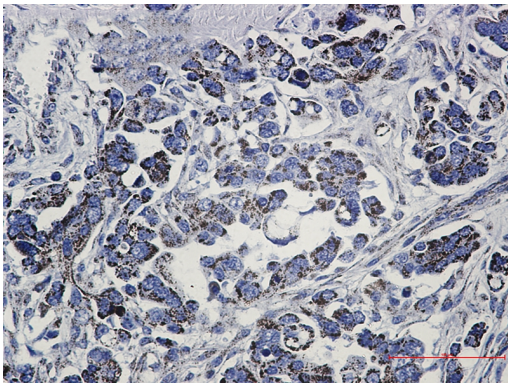
Application Details

WB: 1/1000; IHC: 1/20

Images



Western blot detection of Methylmalonyl Coenzyme A mutase in HeLa,Rat Brain lysates using Methylmalonyl Coenzyme A mutase Rabbit mAb(1:500 diluted).Predicted band size:83kDa.Observed band size:83kDa.



Immunohistochemistry of Methylmalonyl Coenzyme A mutase in paraffin-embedded Human Cholangiocarcinoma using Methylmalonyl Coenzyme A mutase Rabbit mAb at dilution 1/50

Background

Swiss-Prot Acc.P22033. Involved in the degradation of several amino acids, odd-chain fatty acids and cholesterol via propionyl-CoA to the tricarboxylic acid cycle. MCM has different functions in other species.

Note: This product is for in vitro research use only