

MIF Rabbit mAb

Catalog No: #52418

Package Size: #52418-1 50ul #52418-2 100ul

Orders: order@signalwayantibody.com

Support: tech@signalwayantibody.com

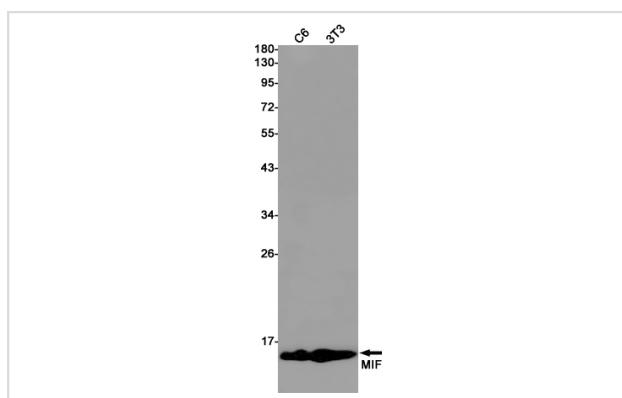
Description

Product Name	MIF Rabbit mAb
Host Species	Recombinant Rabbit
Clonality	Monoclonal antibody
Clone No.	S05-8H5
Isotype	Rabbit IgG
Purification	Affinity Purified
Applications	WB
Species Reactivity	Human,Mouse,Rat
Immunogen Description	Recombinant protein of human MIF
Conjugates	Unconjugated
Modification	Unmodification
Other Names	GIF; GLIF; MMIF
Accession No.	Swiss-Prot:P14174GenelD:4282
Uniprot	P14174
GenelD	4282
Calculated MW	Calculated MW: 13 kDa; Observed MW: 13 kDa
Concentration	0.3 mg/ml
Formulation	50mM Tris-Glycine(pH 7.4), 0.15M NaCl, 40% Glycerol, 0.01% Sodium azide and 0.05% BSA
Storage	Store at 4°C short term. Aliquot and store at -20°C long term. Avoid freeze/thaw cycles.

Application Details

WB: 1/1000;

Images



Western blot detection of MIF in C6,3T3 cell lysates using MIF Rabbit mAb(1:1000 diluted).Predicted band size:13kDa.Observed band size:13kDa.

Background

Swiss-Prot Acc.P14174.Pro-inflammatory cytokine. Involved in the innate immune response to bacterial pathogens. The expression of MIF at sites of inflammation suggests a role as mediator in regulating the function of macrophages in host defense. Counteracts the anti-inflammatory activity of glucocorticoids. Has phenylpyruvate tautomerase and dopachrome tautomerase activity (in vitro), but the physiological substrate is not known. It is not clear whether the tautomerase activity has any physiological relevance, and whether it is important for cytokine activity.

Note: This product is for in vitro research use only