

MiTF Rabbit mAb

Catalog No: #52419



Package Size: #52419-1 50ul #52419-2 100ul

Orders: order@signalwayantibody.com
Support: tech@signalwayantibody.com

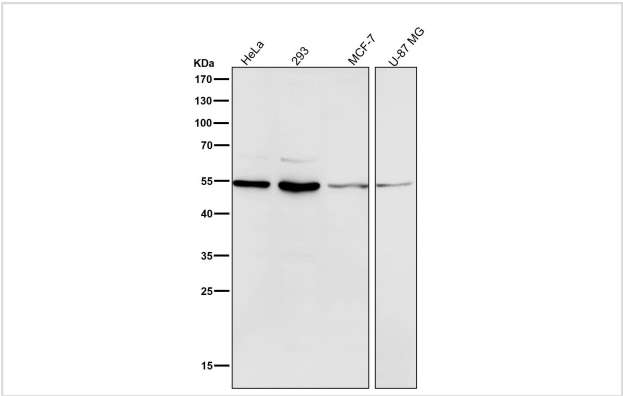
Description

Product Name	MiTF Rabbit mAb
Clone No.	S06-4B5
Isotype	Rabbit IgG
Purification	Affinity-chromatography
Applications	WB;ICC/IF
Species Reactivity	Human,Mouse,Rat
Immunogen Description	A synthesized peptide derived from human MITF
Conjugates	Unconjugated
Modification	Unmodification
Other Names	MI; WS2; CMM8; WS2A; COMMAD; bHLHe32
Accession No.	Swiss-Prot:O75030GeneID:4286
Uniprot	O75030
GeneID	4286
Calculated MW	Calculated MW: 59 kDa; Observed MW: 52 kDa
Concentration	0.8mg/ml
Formulation	Rabbit IgG in 10mM phosphate buffered saline , pH 7.4, 150mM sodium chloride, 0.05% BSA, 0.02% sodium azide and 50% glycerol.
Storage	Store at 4°C short term. Aliquot and store at -20°C long term. Avoid freeze/thaw cycles.

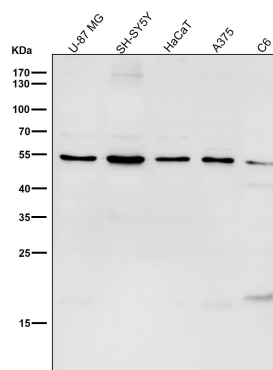
Application Details

WB 1:1000-1:2000;
ICC/IF 1:50-1:200

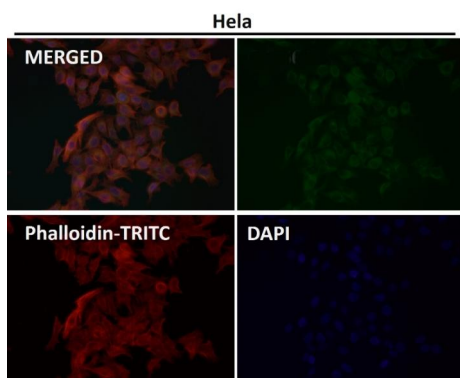
Images



All lanes use the Antibody at 1:1K dilution for 1 hour at room temperature.



All lanes use the Antibody at 1:1K dilution for 1 hour at room temperature.



Immunofluorescent analysis using the Antibody at 1:50 dilution.

Background

Transcription factor that acts as a master regulator of melanocyte survival and differentiation as well as melanosome biogenesis. Binds to M-boxes (5'-TCATGTG-3') and symmetrical DNA sequences (E-boxes) (5'-CACGTG-3') found in the promoter of pigmentation genes, such as tyrosinase (TYR).

Note: This product is for in vitro research use only