

MLD Rabbit mAb

Catalog No: #52422

Package Size: #52422-1 50ul #52422-2 100ul

Orders: order@signalwayantibody.com

Support: tech@signalwayantibody.com

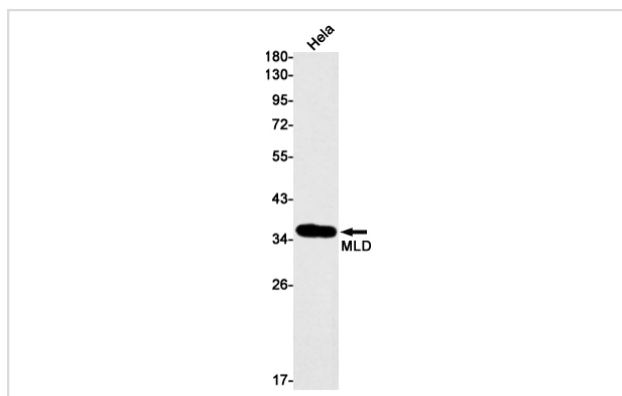
Description

Product Name	MLD Rabbit mAb
Host Species	Recombinant Rabbit
Clonality	Monoclonal antibody
Clone No.	S03-5D2
Isotype	Rabbit IgG
Purification	Affinity Purified
Applications	WB
Species Reactivity	Human
Immunogen Description	A synthetic peptide of human MLD
Conjugates	Unconjugated
Modification	Unmodification
Other Names	MLD; DEGS; DES1; Des-1; FADS7; MIG15; DEGS-1
Accession No.	Swiss-Prot:O15121GeneID:8560
Uniprot	O15121
GeneID	8560
Calculated MW	Calculated MW: 38 kDa; Observed MW: 38 kDa
Concentration	0.3 mg/ml
Formulation	50mM Tris-Glycine(pH 7.4), 0.15M NaCl, 40% Glycerol, 0.01% Sodium azide and 0.05% BSA
Storage	Store at 4°C short term. Aliquot and store at -20°C long term. Avoid freeze/thaw cycles.

Application Details

WB: 1/1000

Images



Western blot detection of MLD in HeLa cell lysates using MLD Rabbit mAb(1:1000 diluted). Predicted band size:38kDa. Observed band size:38kDa.

Background

Swiss-Prot Acc.O15121.Has sphingolipid-delta-4-desaturase activity. Converts D-erythro-sphinganine to D-erythro-sphingosine (E-sphing-4-ene).

Note: This product is for in vitro research use only