

MLK3 Rabbit mAb

Catalog No: #52424



Package Size: #52424-1 50ul #52424-2 100ul

Orders: order@signalwayantibody.com
Support: tech@signalwayantibody.com

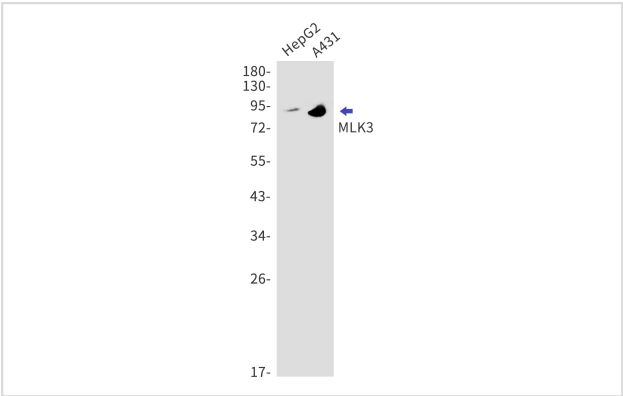
Description

Product Name	MLK3 Rabbit mAb
Host Species	Recombinant Rabbit
Clonality	Monoclonal antibody
Clone No.	S07-2C3
Isotype	Rabbit IgG
Purification	Affinity Purified
Applications	WB
Species Reactivity	Human,Mouse
Immunogen Description	A synthetic peptide of human MLK3
Conjugates	Unconjugated
Modification	Unmodification
Other Names	Mixed lineage kinase 3;Src-homology 3 domain-containing proline-rich kinase
Accession No.	Swiss-Prot:Q16584GeneID:4296
Uniprot	Q16584
GeneID	4296
Calculated MW	Calculated MW: 93 kDa; Observed MW: 93 kDa
Concentration	0.3 mg/ml
Formulation	50mM Tris-Glycine(pH 7.4), 0.15M NaCl, 40% Glycerol, 0.01% Sodium azide and 0.05% BSA
Storage	Store at 4°C short term. Aliquot and store at -20°C long term. Avoid freeze/thaw cycles.

Application Details

WB: 1/2000;

Images



Western blot detection of MLK3 in HepG2 and A431 lysates using MLK3 antibody. Predicted band size: 93kDa. Observed band size: 93kDa.

Background

Swiss-Prot Acc.Q16584.Activates the JUN N-terminal pathway. Required for serum-stimulated cell proliferation and for mitogen and cytokine activation of MAPK14 (p38), MAPK3 (ERK) and MAPK8 (JNK1) through phosphorylation and activation of MAP2K4/MKK4 and MAP2K7/MKK7. Plays a role in mitogen-stimulated phosphorylation and activation of BRAF, but does not phosphorylate BRAF directly. Influences microtubule organization during the cell cycle.

Note: This product is for in vitro research use only