

MMP26 Rabbit mAb

Catalog No: #52427

Package Size: #52427-1 50ul #52427-2 100ul

Orders: order@signalwayantibody.com

Support: tech@signalwayantibody.com

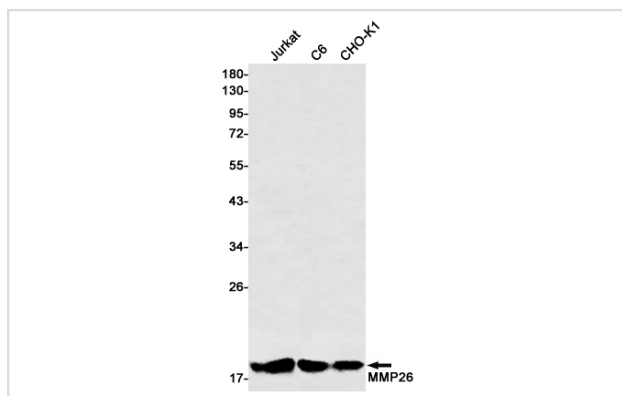
Description

Product Name	MMP26 Rabbit mAb
Host Species	Recombinant Rabbit
Clonality	Monoclonal antibody
Clone No.	S01-7A4
Isotype	Rabbit IgG
Purification	Affinity Purified
Applications	WB
Species Reactivity	Human,Mouse,Rat
Immunogen Description	A synthetic peptide of human MMP26
Conjugates	Unconjugated
Modification	Unmodification
Other Names	Endometase;Matrilysin-2
Accession No.	Swiss-Prot:Q3MJ78GeneID:56547
Uniprot	Q3MJ78
GeneID	56547
Calculated MW	Calculated MW: 30 kDa; Observed MW: 19 kDa
Concentration	0.3 mg/ml
Formulation	50mM Tris-Glycine(pH 7.4), 0.15M NaCl, 40% Glycerol, 0.01% Sodium azide and 0.05% BSA
Storage	Store at 4°C short term. Aliquot and store at -20°C long term. Avoid freeze/thaw cycles.

Application Details

WB: 1/1000

Images



Western blot detection of MMP26 in Jurkat,C6,CHO-K1 cell lysates using MMP26 Rabbit mAb(1:500 diluted).Predicted band size:30kDa.Observed band size:19kDa.

Background

Swiss-Prot Acc.Q3MJ78. May hydrolyze collagen type IV, fibronectin, fibrinogen, beta-casein, type I gelatin and alpha-1 proteinase inhibitor. Is also able to activate progelatinase B.

Note: This product is for in vitro research use only