

MRPS26 Rabbit mAb

Catalog No: #52432

Package Size: #52432-1 50ul #52432-2 100ul

Orders: order@signalwayantibody.com

Support: tech@signalwayantibody.com

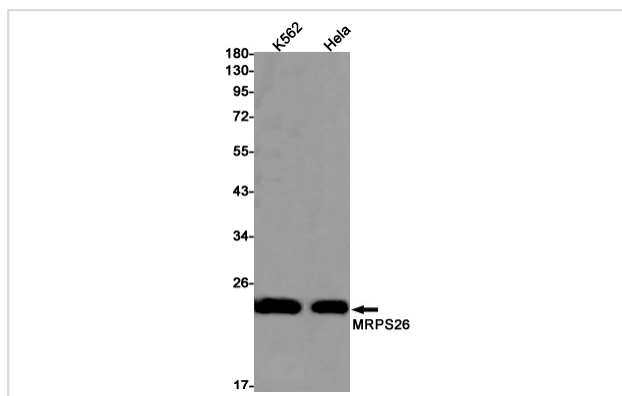
Description

Product Name	MRPS26 Rabbit mAb
Host Species	Recombinant Rabbit
Clonality	Monoclonal antibody
Clone No.	S01-2D6
Isotype	Rabbit IgG
Purification	Affinity Purified
Applications	WB IF
Species Reactivity	Human
Immunogen Description	Recombinant protein of human MRPS26
Conjugates	Unconjugated
Modification	Unmodification
Other Names	GI008; MRPS13; RPMS13; MRP-S13; MRP-S26; NY-BR-87; C20orf193; dJ534B8.3
Accession No.	Swiss-Prot:Q9BYN8GeneID:64949
Uniprot	Q9BYN8
GeneID	64949
Calculated MW	Calculated MW: 24 kDa; Observed MW: 24 kDa
Concentration	0.3 mg/ml
Formulation	50mM Tris-Glycine(pH 7.4), 0.15M NaCl, 40% Glycerol, 0.01% Sodium azide and 0.05% BSA
Storage	Store at 4°C short term. Aliquot and store at -20°C long term. Avoid freeze/thaw cycles.

Application Details

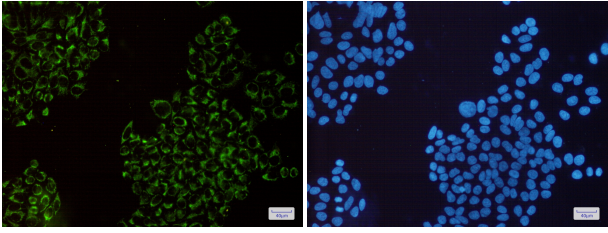
WB: 1/1000; ICC/IF: 1/50

Images



Western blot detection of MRPS26 in K562, HeLa cell lysates using MRPS26 Rabbit mAb (1:1000 diluted). Predicted band size: 24 kDa. Observed band size: 24 kDa.

Immunofluorescence of MRPS26(green) in HeLa cells using MRPS26 Rabbit mAb at dilution 1/50, and DAPI(blue)



Background

Swiss-Prot Acc.Q9BYN8.28S ribosomal protein S26, mitochondrial

Note: This product is for in vitro research use only