

## MRPS31 Rabbit mAb

Catalog No: #52433

Package Size: #52433-1 50ul #52433-2 100ul

Orders: order@signalwayantibody.com

Support: tech@signalwayantibody.com

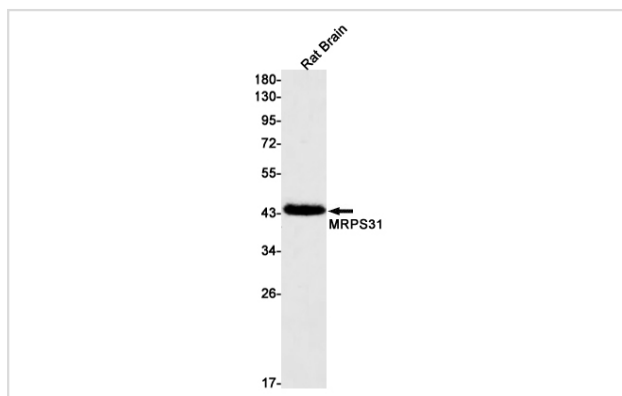
## Description

Product Name	MRPS31 Rabbit mAb
Host Species	Recombinant Rabbit
Clonality	Monoclonal antibody
Clone No.	S04-4C1
Isotype	Rabbit IgG
Purification	Affinity Purified
Applications	WB
Species Reactivity	Human,Mouse,Rat
Immunogen Description	A synthetic peptide of human MRPS31
Conjugates	Unconjugated
Modification	Unmodification
Other Names	S31mt; IMOGN38; MRP-S31
Accession No.	Swiss-Prot:Q92665GeneID:10240
Uniprot	Q92665
GeneID	10240
Calculated MW	Calculated MW: 45 kDa; Observed MW: 45 kDa
Concentration	0.3 mg/ml
Formulation	50mM Tris-Glycine(pH 7.4), 0.15M NaCl, 40% Glycerol, 0.01% Sodium azide and 0.05% BSA
Storage	Store at 4°C short term. Aliquot and store at -20°C long term. Avoid freeze/thaw cycles.

## Application Details

WB: 1/1000

## Images



Western blot detection of MRPS31 in Rat Brain lysates using MRPS31 Rabbit mAb(1:1000 diluted).Predicted band size:45kDa.Observed band size:45kDa.

## Background

---

Swiss-Prot Acc.Q92665.28S ribosomal protein S31, mitochondrial

---

Note: This product is for in vitro research use only