

MTCO2 Rabbit mAb

Catalog No: #52436

Package Size: #52436-1 50ul #52436-2 100ul

Orders: order@signalwayantibody.com

Support: tech@signalwayantibody.com

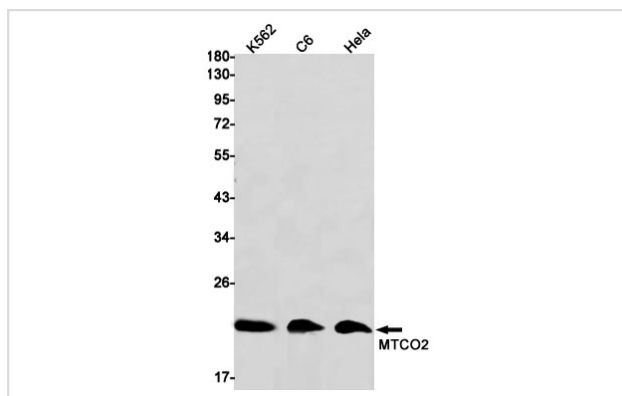
Description

Product Name	MTCO2 Rabbit mAb
Host Species	Recombinant Rabbit
Clonality	Monoclonal antibody
Clone No.	S05-7E7
Isotype	Rabbit IgG
Purification	Affinity Purified
Applications	WB IHC
Species Reactivity	Human
Immunogen Description	A synthetic peptide of human MTCO2
Conjugates	Unconjugated
Modification	Unmodification
Other Names	COII; MTCO2; COX2
Accession No.	Swiss-Prot:P00403GenelD:4513
Uniprot	P00403
GenelD	4513
Calculated MW	Calculated MW: 26 kDa; Observed MW: 21 kDa
Concentration	0.3 mg/ml
Formulation	50mM Tris-Glycine(pH 7.4), 0.15M NaCl, 40% Glycerol, 0.01% Sodium azide and 0.05% BSA
Storage	Store at 4°C short term. Aliquot and store at -20°C long term. Avoid freeze/thaw cycles.

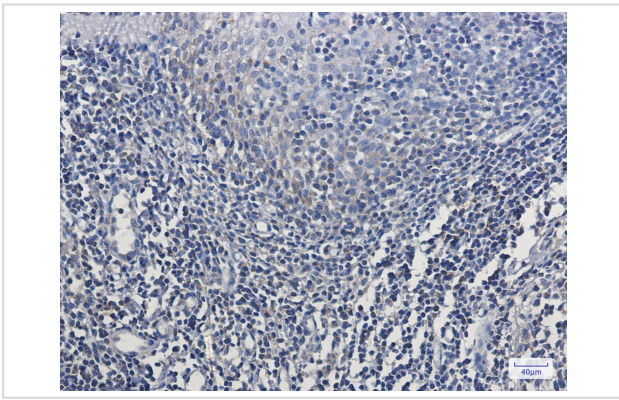
Application Details

WB: 1/1000-1/5000; IHC: 1/20-1/100;

Images



Western blot detection of MTCO2 in K562, C6, HeLa cell lysates using MTCO2 Rabbit mAb (1:1000 diluted). Predicted band size: 26 kDa. Observed band size: 21 kDa.



Immunohistochemistry of MTCO2 in paraffin-embedded Human tonsil using MTCO2 Rabbit mAb at dilution 1/50

Background

Swiss-Prot Acc.P00403.Cytochrome c oxidase is the component of the respiratory chain that catalyzes the reduction of oxygen to water. Subunits 1-3 form the functional core of the enzyme complex. Subunit 2 transfers the electrons from cytochrome c via its binuclear copper A center to the bimetallic center of the catalytic subunit 1.

Note: This product is for in vitro research use only