

MTX3 Rabbit mAb

Catalog No: #52439

Package Size: #52439-1 50ul #52439-2 100ul

Orders: order@signalwayantibody.com

Support: tech@signalwayantibody.com

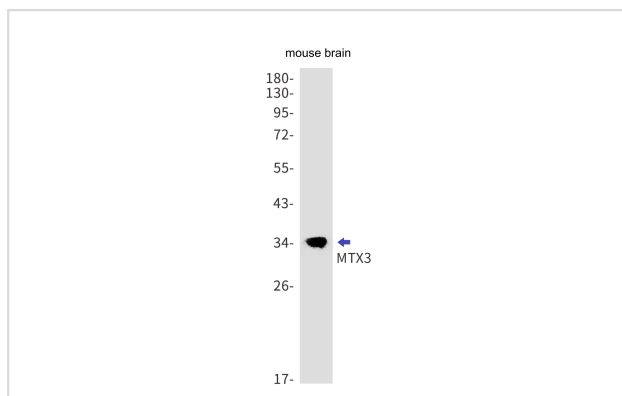
Description

Product Name	MTX3 Rabbit mAb
Host Species	Recombinant Rabbit
Clonality	Monoclonal antibody
Clone No.	S08-2K4
Isotype	Rabbit IgG
Purification	Affinity Purified
Applications	WB
Species Reactivity	Human,Mouse,Rat
Immunogen Description	A synthetic peptide of human MTX3
Conjugates	Unconjugated
Modification	Unmodification
Other Names	Metaxin-3
Accession No.	Swiss-Prot:Q5HYI7GeneID:345778
Uniprot	Q5HYI7
GeneID	345778
Calculated MW	Calculated MW: 35 kDa; Observed MW: 35 kDa
Concentration	0.3 mg/ml
Formulation	50mM Tris-Glycine(pH 7.4), 0.15M NaCl, 40% Glycerol, 0.01% Sodium azide and 0.05% BSA
Storage	Store at 4°C short term. Aliquot and store at -20°C long term. Avoid freeze/thaw cycles.

Application Details

WB: 1/1000-1/5000

Images



Western blot detection of MTX3 in mouse brain cell lysates using MTX3 Rabbit mAb(1:1000 diluted).Predicted band size:35kDa.Observed band size:35kDa.

Background

Swiss-Prot Acc.Q5HY17.Could function in transport of proteins into the mitochondrion.

Note: This product is for in vitro research use only