

NAT1 Rabbit mAb

Catalog No: #52447



Package Size: #52447-1 50ul #52447-2 100ul

Orders: order@signalwayantibody.com
Support: tech@signalwayantibody.com

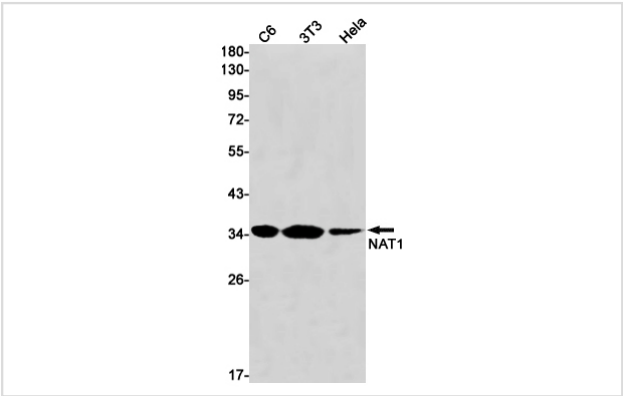
Description

Product Name	NAT1 Rabbit mAb
Host Species	Recombinant Rabbit
Clonality	Monoclonal antibody
Clone No.	S09-8F5
Isotype	Rabbit IgG
Purification	Affinity Purified
Applications	WB
Species Reactivity	Human
Immunogen Description	A synthetic peptide of human NAT1
Conjugates	Unconjugated
Modification	Unmodification
Other Names	AAC1; MNAT; NATI; NAT-1
Accession No.	Swiss-Prot:P18440GeneID:9
Uniprot	P18440
GeneID	9
Calculated MW	Calculated MW: 34 kDa; Observed MW: 34 kDa
Concentration	0.3 mg/ml
Formulation	50mM Tris-Glycine(pH 7.4), 0.15M NaCl, 40% Glycerol, 0.01% Sodium azide and 0.05% BSA
Storage	Store at 4°C short term. Aliquot and store at -20°C long term. Avoid freeze/thaw cycles.

Application Details

WB: 1/1000-1/5000

Images



Western blot detection of NAT1 in C6,3T3,Hela cell lysates using NAT1 Rabbit mAb(1:1000 diluted).Predicted band size:34kDa.Observed band size:34kDa.

Background

Swiss-Prot Acc.P18440.Participates in the detoxification of a plethora of hydrazine and arylamine drugs. Catalyzes the N- or O-acetylation of various arylamine and heterocyclic amine substrates and is able to bioactivate several known carcinogens.MiscellaneousNAT1 was historically considered to be monomorphic in nature but reports of allelic variations at the NAT1 locus suggest that it is a polymorphically expressed enzyme.CautionThe allelic variation Ile-149 designated as NAT1*17 is part of the NAT1*11 allelic variation as reported by the nomenclature committee.

Note: This product is for in vitro research use only