

## NF2 Rabbit mAb

Catalog No: #52459

Package Size: #52459-1 50ul #52459-2 100ul

Orders: order@signalwayantibody.com

Support: tech@signalwayantibody.com

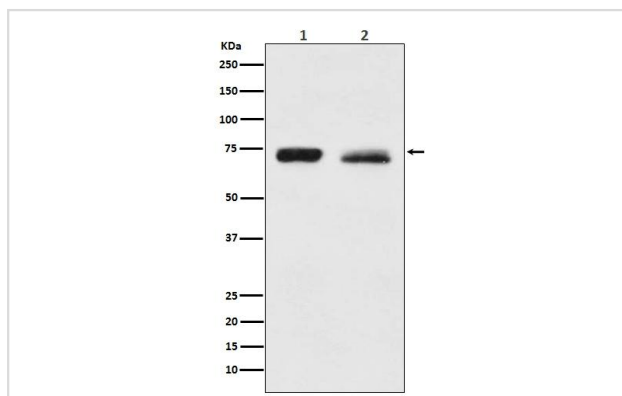
## Description

Product Name	NF2 Rabbit mAb
Clone No.	S07-1A6
Isotype	Rabbit IgG
Purification	Affinity-chromatography
Applications	WB
Species Reactivity	Human,Mouse,Rat
Immunogen Description	A synthetic peptide of human NF2/Merlin
Conjugates	Unconjugated
Modification	Unmodification
Other Names	ACN; BANF; Merlin; Moesin ezrin radixin like protein; Neurofibromatosis 2; Neurofibromin 2; Nf2; SCH; Schwannomerlin;
Accession No.	Swiss-Prot:P35240GenelD:4771
Uniprot	P35240
GeneID	4771
Calculated MW	Calculated MW: 70 kDa; Observed MW: 70 kDa
Concentration	0.3 mg/ml
Formulation	Rabbit IgG in 10mM phosphate buffered saline , pH 7.4, 150mM sodium chloride, 0.05% BSA, 0.02% sodium azide and 50% glycerol.
Storage	Store at 4°C short term. Aliquot and store at -20°C long term. Avoid freeze/thaw cycles.

## Application Details

WB 1:1000-1:2000

## Images



Western blot analysis of NF2 / Merlin expression in (1) HeLa cell lysate; (2) PC3 cell lysate.

## Background

---

Probable regulator of the Hippo/SWH (Sav/Wts/Hpo) signaling pathway, a signaling pathway that plays a pivotal role in tumor suppression by restricting proliferation and promoting apoptosis.

---

Note: This product is for in vitro research use only