

Nodal Rabbit mAb

Catalog No: #52466

Package Size: #52466-1 50ul #52466-2 100ul

Orders: order@signalwayantibody.com

Support: tech@signalwayantibody.com

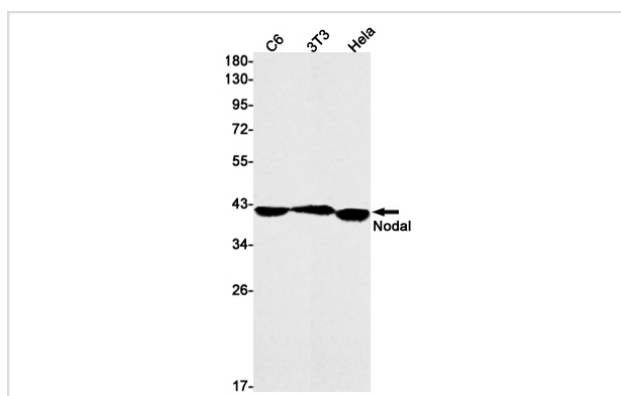
Description

Product Name	Nodal Rabbit mAb
Host Species	Recombinant Rabbit
Clonality	Monoclonal antibody
Clone No.	S06-5A3
Isotype	Rabbit IgG
Purification	Affinity Purified
Applications	WB
Species Reactivity	Human,Rat
Immunogen Description	A synthetic peptide of human Nodal
Conjugates	Unconjugated
Modification	Unmodification
Other Names	HTX5
Accession No.	Swiss-Prot:Q96S42GeneID:4838
Uniprot	Q96S42
GeneID	4838
Calculated MW	Calculated MW: 40 kDa; Observed MW: 40 kDa
Concentration	0.3 mg/ml
Formulation	50mM Tris-Glycine(pH 7.4), 0.15M NaCl, 40% Glycerol, 0.01% Sodium azide and 0.05% BSA
Storage	Store at 4°C short term. Aliquot and store at -20°C long term. Avoid freeze/thaw cycles.

Application Details

WB: 1/1000-1/5000;

Images



Western blot detection of Nodal in C6,3T3,HeLa cell lysates using Nodal Rabbit mAb(1:1000 diluted).Predicted band size:40kDa.Observed band size:40kDa.

Background

Swiss-Prot Acc.Q96S42.Essential for mesoderm formation and axial patterning during embryonic development.

Note: This product is for in vitro research use only