

P Glycoprotein Rabbit mAb

Catalog No: #52481

Package Size: #52481-1 50ul #52481-2 100ul

Orders: order@signalwayantibody.com

Support: tech@signalwayantibody.com

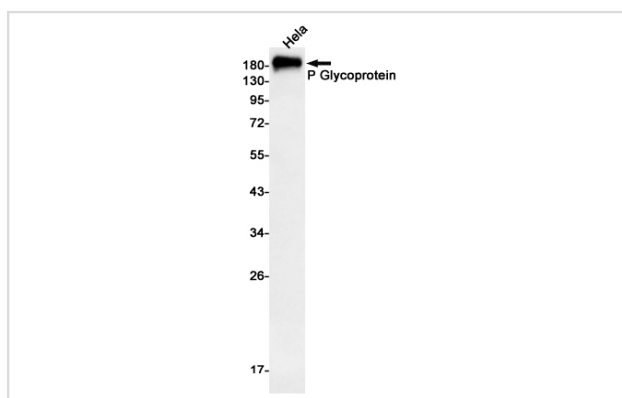
Description

Product Name	P Glycoprotein Rabbit mAb
Host Species	Recombinant Rabbit
Clonality	Monoclonal antibody
Clone No.	S02-6B2
Isotype	Rabbit IgG
Purification	Affinity Purified
Applications	WB
Species Reactivity	Human
Immunogen Description	Recombinant protein of human P Glycoprotein
Conjugates	Unconjugated
Modification	Unmodification
Other Names	CLCS; MDR1; P-GP; PGY1; ABC20; CD243; GP170
Accession No.	Swiss-Prot:P08183GenelD:5243
Uniprot	P08183
GenelD	5243
Calculated MW	Calculated MW: 142 kDa; Observed MW: 130-180 kDa
Concentration	0.3 mg/ml
Formulation	50mM Tris-Glycine(pH 7.4), 0.15M NaCl, 40% Glycerol, 0.01% Sodium azide and 0.05% BSA
Storage	Store at 4°C short term. Aliquot and store at -20°C long term. Avoid freeze/thaw cycles.

Application Details

WB: 1/1000-1/2000

Images



Western blot detection of P Glycoprotein in HeLa cell lysates using P Glycoprotein Rabbit mAb(1:1000 diluted).Predicted band size:142kDa.Observed band size:130-180kDa.

Background

Swiss-Prot Acc.P08183.Energy-dependent efflux pump responsible for decreased drug accumulation in multidrug-resistant cells.

Note: This product is for in vitro research use only