

## Cadherin Rabbit mAb

Catalog No: #52486

Package Size: #52486-1 50ul #52486-2 100ul

Orders: order@signalwayantibody.com

Support: tech@signalwayantibody.com

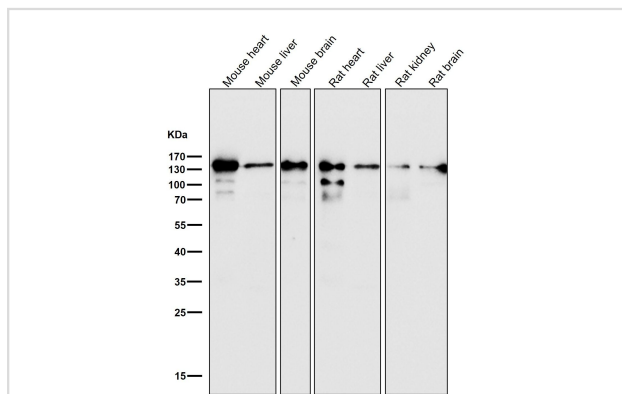
## Description

Product Name	Cadherin Rabbit mAb
Clone No.	S04-5A8
Isotype	Rabbit IgG
Purification	Affinity Purified
Applications	WB,IHC,ICC/IF,IP,FC
Species Reactivity	Human,Mouse,Rat
Immunogen Description	A synthetic peptide of human pan Cadherin
Conjugates	Unconjugated
Modification	Unmodification
Other Names	CDHP; CDHE;HJMD; PCAD;CDHN;P-cadherin;E-cadherin;N-cadherin;Cadherin-1;Cadherin-2;Cadherin-3;
Accession No.	Swiss-Prot:P12830 P22223 P19022GeneID:1001
Uniprot	P12830/P19022/P22223/P33151/P55283/P39038
GeneID	1001
Calculated MW	140kDa
Formulation	Rabbit IgG in phosphate buffered saline , pH 7.4, 150mM NaCl, 0.02% sodium azide and 50% glycerol.
Storage	Store at 4°C short term. Aliquot and store at -20°C long term. Avoid freeze/thaw cycles.

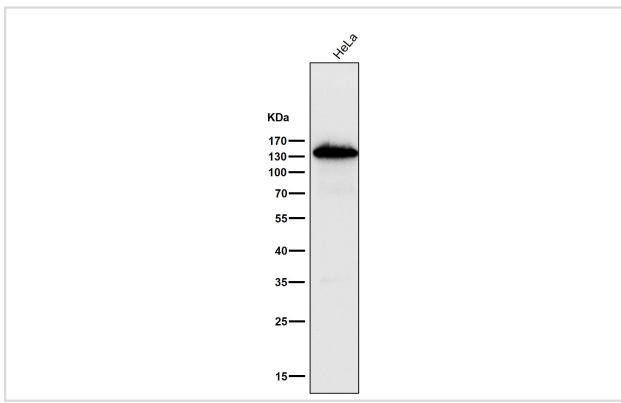
## Application Details

WB 1:1000-1:5000 IHC 1:50-1:200 ICC/IF 1:50-1:200 IP 1:50 FC 1:50

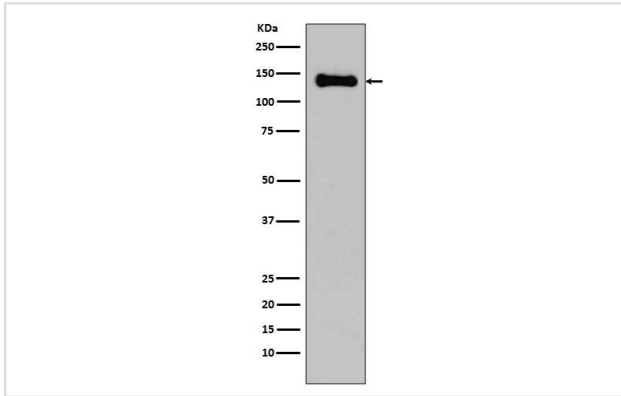
## Images



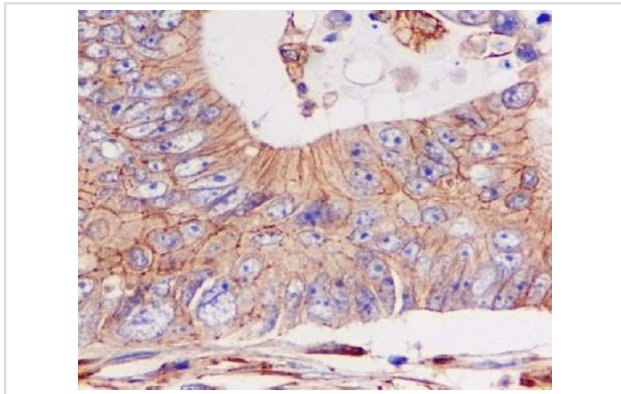
All lanes use the Antibody at 1:1W dilution for 1 hour at room temperature.



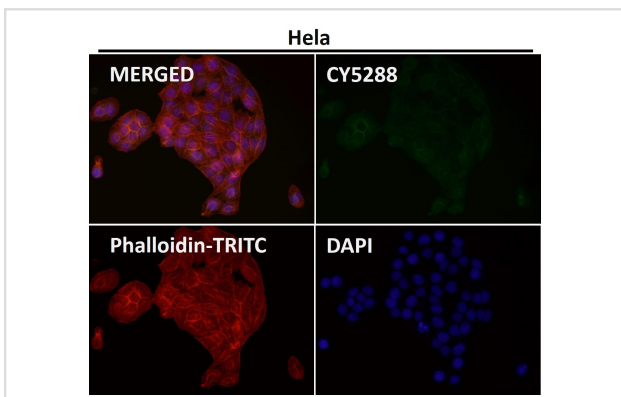
All lanes use the Antibody at 1:1W dilution for 1 hour at room temperature.



Western blot analysis of pan Cadherin expression in C6 cell lysate.



Immunohistochemical analysis of paraffin-embedded colon cancer, using pan Cadherin Antibody .



Immunofluorescent analysis using the Antibody at 1:50 dilution.

## Background

Cadherins are members of a multigene family of single chain glycoprotein receptors mediating calcium dependent cell-cell adhesion. They play an important role in the growth and development of cells via the mechanisms of control of tissue architecture and the maintenance of tissue integrity. Cadherins are expressed in a tissue specific manner and are required for assembly of cells into solid tissue.

---

Note: This product is for in vitro research use only