

## PCPTP1 Rabbit mAb

Catalog No: #52490

Package Size: #52490-1 50ul #52490-2 100ul

Orders: [order@signalwayantibody.com](mailto:order@signalwayantibody.com)Support: [tech@signalwayantibody.com](mailto:tech@signalwayantibody.com)

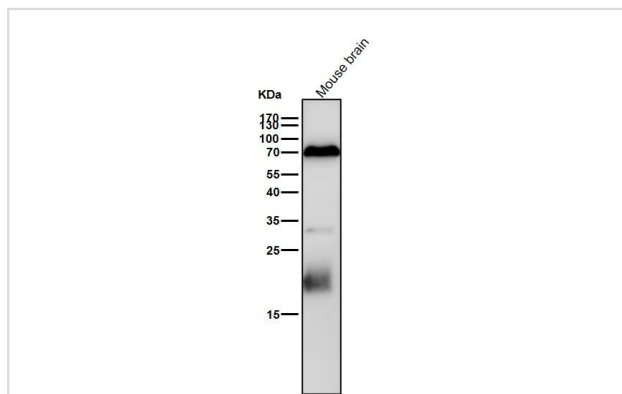
## Description

Product Name	PCPTP1 Rabbit mAb
Clone No.	S01-8G2
Isotype	Rabbit IgG
Purification	Affinity Purified
Applications	WB,IHC
Species Reactivity	Human,Mouse,Rat
Immunogen Description	A synthetic peptide of human PCPTP1
Conjugates	Unconjugated
Modification	Unmodification
Other Names	ECPTP; NC PTPCOM1; PTPBR7; PTPRQ; PTPRR; PTPSL; Receptor type tyrosine protein phosphatase R;
Accession No.	Swiss-Prot:Q15256GeneID:5801
Uniprot	Q15256
GeneID	5801
Calculated MW	Calculated MW: 74 kDa; Observed MW: 74 kDa
Formulation	Rabbit IgG in phosphate buffered saline , pH 7.4, 150mM NaCl, 0.02% sodium azide and 50% glycerol.
Storage	Store at 4°C short term. Aliquot and store at -20°C long term. Avoid freeze/thaw cycles.

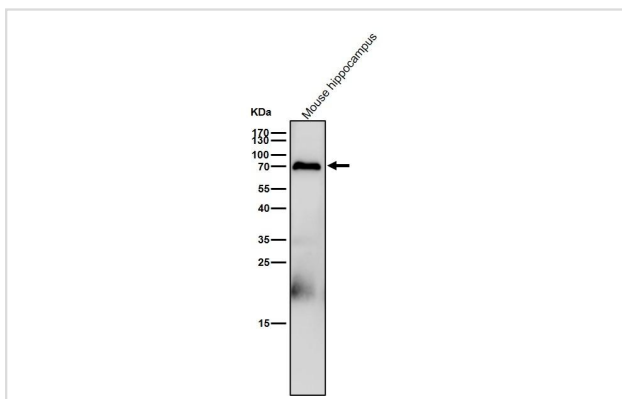
## Application Details

WB 1:500-1:2000 IHC 1:50-1:200

## Images



All lanes use the Antibody at 1:1K dilution for 1 hour at room temperature.



All lanes use the Antibody at 1:1K dilution for 1 hour at room temperature.

## Background

Sequesters mitogen-activated protein kinases (MAPKs) such as MAPK1, MAPK3 and MAPK14 in the cytoplasm in an inactive form. The MAPKs bind to a dephosphorylated kinase interacting motif, phosphorylation of which by the protein kinase A complex releases the MAPKs for activation and translocation into the nucleus.

Note: This product is for in vitro research use only