

PDE1B Rabbit mAb

Catalog No: #52492

Package Size: #52492-1 50ul #52492-2 100ul

Orders: order@signalwayantibody.comSupport: tech@signalwayantibody.com

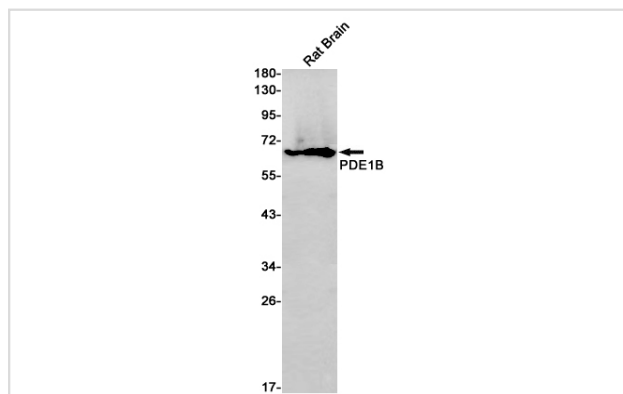
Description

Product Name	PDE1B Rabbit mAb
Host Species	Recombinant Rabbit
Clonality	Monoclonal antibody
Clone No.	S03-6F9
Isotype	Rabbit IgG
Purification	Affinity Purified
Applications	WB
Species Reactivity	Human,Mouse,Rat
Immunogen Description	Recombinant protein of human PDE1B
Conjugates	Unconjugated
Modification	Unmodification
Other Names	PDE1B1; PDES1B; HEL-S-79p
Accession No.	Swiss-Prot:Q01064GeneID:
Uniprot	Q01064
Calculated MW	Calculated MW: 61 kDa; Observed MW: 61 kDa
Concentration	0.3 mg/ml
Formulation	50mM Tris-Glycine(pH 7.4), 0.15M NaCl, 40% Glycerol, 0.01% Sodium azide and 0.05% BSA
Storage	Store at 4°C short term. Aliquot and store at -20°C long term. Avoid freeze/thaw cycles.

Application Details

WB: 1/1000;

Images



Western blot detection of PDE1B in Rat Brain lysates using PDE1B Rabbit mAb(1:1000 diluted).Predicted band size:61kDa.Observed band size:61kDa.

Background

Swiss-Prot Acc.Q01064.Cyclic nucleotide phosphodiesterase with a dual-specificity for the second messengers cAMP and cGMP, which are key

regulators of many important physiological processes. Has a preference for cGMP as a substrate.

Note: This product is for in vitro research use only