

PDLIM7 Rabbit mAb

Catalog No: #52495

Package Size: #52495-1 50ul #52495-2 100ul

Orders: order@signalwayantibody.com

Support: tech@signalwayantibody.com

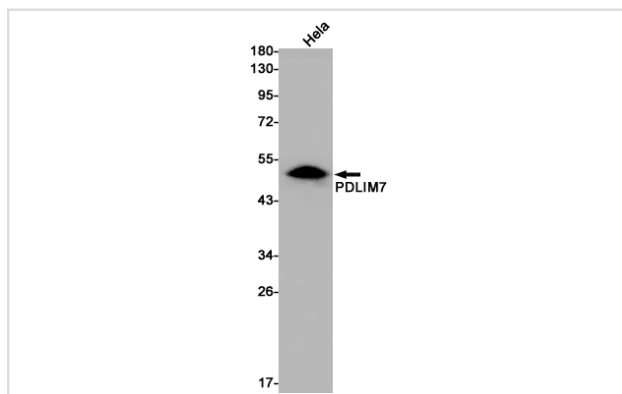
Description

Product Name	PDLIM7 Rabbit mAb
Host Species	Recombinant Rabbit
Clonality	Monoclonal antibody
Clone No.	S05-5A1
Isotype	Rabbit IgG
Purification	Affinity Purified
Applications	WB
Species Reactivity	Human
Immunogen Description	Recombinant protein of human PDLIM7
Conjugates	Unconjugated
Modification	Unmodification
Other Names	LIM mineralization protein;LMP;Protein enigma
Accession No.	Swiss-Prot:Q9NR12GeneID:
Uniprot	Q9NR12
Calculated MW	Calculated MW: 50 kDa; Observed MW: 50 kDa
Concentration	0.3 mg/ml
Formulation	50mM Tris-Glycine(pH 7.4), 0.15M NaCl, 40% Glycerol, 0.01% Sodium azide and 0.05% BSA
Storage	Store at 4°C short term. Aliquot and store at -20°C long term. Avoid freeze/thaw cycles.

Application Details

WB: 1/1000;

Images



Western blot detection of PDLIM7 in HeLa cell lysates using PDLIM7 Rabbit mAb(1:1000 diluted). Predicted band size:50kDa. Observed band size:50kDa.

Background

Swiss-Prot Acc.Q9NR12.May function as a scaffold on which the coordinated assembly of proteins can occur. May play a role as an adapter that, via

its PDZ domain, localizes LIM-binding proteins to actin filaments of both skeletal muscle and nonmuscle tissues. Involved in both of the two fundamental mechanisms of bone formation, direct bone formation (e.g. embryonic flat bones mandible and cranium), and endochondral bone formation (e.g. embryonic long bone development). Plays a role during fracture repair. Involved in BMP6 signaling pathway .

Note: This product is for in vitro research use only