

PEPD Rabbit mAb

Catalog No: #52496

Package Size: #52496-1 50ul #52496-2 100ul

Orders: order@signalwayantibody.comSupport: tech@signalwayantibody.com

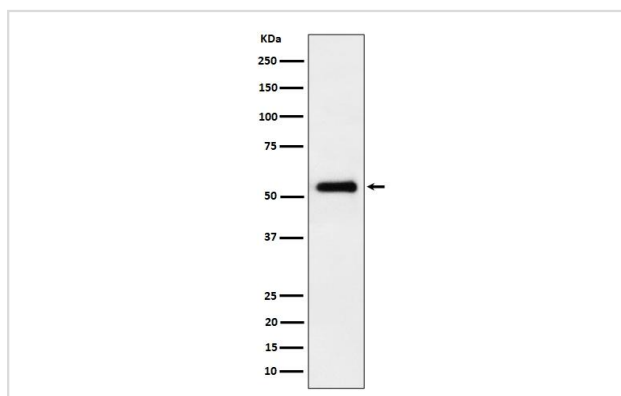
Description

Product Name	PEPD Rabbit mAb
Clone No.	S03-7E5
Isotype	Rabbit IgG
Purification	Affinity Purified
Applications	WB
Species Reactivity	Human
Immunogen Description	A synthetic peptide of human PEPD
Conjugates	Unconjugated
Modification	Unmodification
Other Names	PROLIDASE
Accession No.	Swiss-Prot:P12955GeneID:5184
Uniprot	P12955
GeneID	5184
Calculated MW	Calculated MW: 55 kDa; Observed MW: 55 kDa
Formulation	Rabbit IgG in phosphate buffered saline , pH 7.4, 150mM NaCl, 0.02% sodium azide and 50% glycerol.
Storage	Store at 4°C short term. Aliquot and store at -20°C long term. Avoid freeze/thaw cycles.

Application Details

WB 1:500~1:2000

Images



All lanes use the Antibody at 1:1K dilution for 1 hour at room temperature.

Background

Swiss-Prot Acc.P12955.Splits dipeptides with a prolyl or hydroxyprolyl residue in the C-terminal position. Plays an important role in collagen metabolism because the high level of iminoacids in collagen.

Note: This product is for in vitro research use only