

PGK1 Rabbit mAb

Catalog No: #52503

Package Size: #52503-1 50ul #52503-2 100ul

Orders: order@signalwayantibody.com

Support: tech@signalwayantibody.com

Description

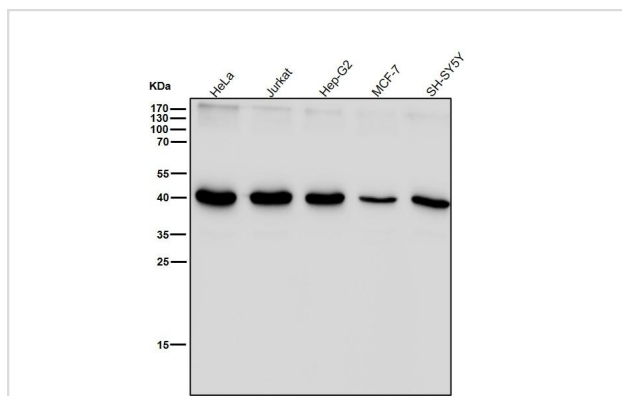
Product Name	PGK1 Rabbit mAb
Clone No.	S04-9H9
Isotype	Rabbit IgG
Purification	Affinity-chromatography
Applications	WB ICC/IF
Species Reactivity	Human,Mouse,Rat
Immunogen Description	A synthetic peptide of human PGK1
Conjugates	Unconjugated
Modification	Unmodification
Other Names	PGKA; MIG10; HEL-S-68p
Accession No.	Swiss-Prot:P00558GeneID:5230
Uniprot	P00558
GeneID	5230
Calculated MW	Calculated MW: 45 kDa; Observed MW: 45 kDa
Concentration	0.5 mg/ml
Formulation	Rabbit IgG in 10mM phosphate buffered saline , pH 7.4, 150mM sodium chloride, 0.05% BSA, 0.02% sodium azide and 50% glycerol.
Storage	Store at 4°C short term. Aliquot and store at -20°C long term. Avoid freeze/thaw cycles.

Application Details

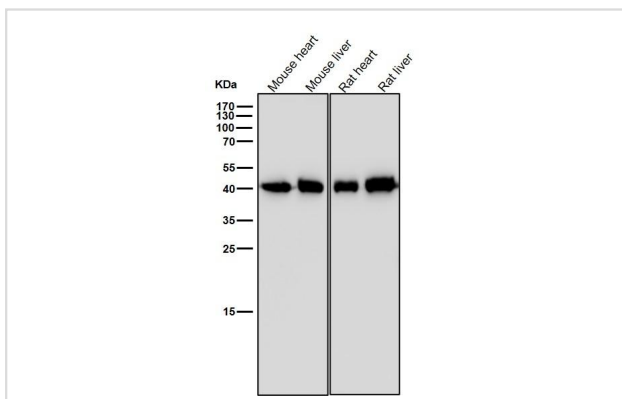
WB 1:1000-1:2000

ICC/IF 1:50-1:200

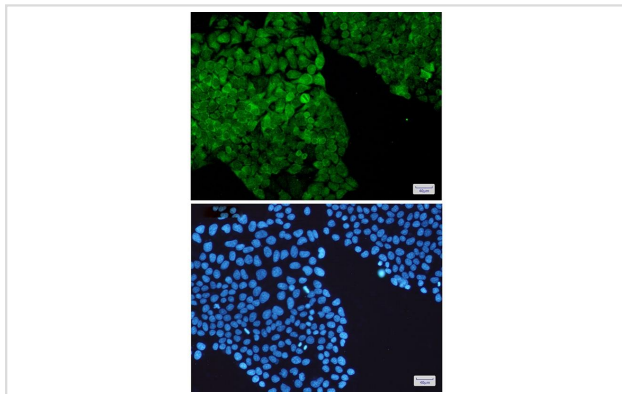
Images



All lanes use the Antibody at 1:2K dilution for 1 hour at room temperature.



All lanes use the Antibody at 1:2K dilution for 1 hour at room temperature.



Immunocytochemistry analysis of PGK1 (green) in HeLa using PGK1 antibody, and DAPI (blue).

Background

Catalyzes one of the two ATP producing reactions in the glycolytic pathway via the reversible conversion of 1,3-diphosphoglycerate to 3-phosphoglycerate. In addition to its role as a glycolytic enzyme, it seems that PGK-1 acts as a polymerase alpha cofactor protein.

Note: This product is for in vitro research use only