

Phospho-PKA RII alpha (Ser99) Rabbit mAb

Catalog No: #52508

Package Size: #52508-1 50ul #52508-2 100ul

Orders: order@signalwayantibody.com

Support: tech@signalwayantibody.com

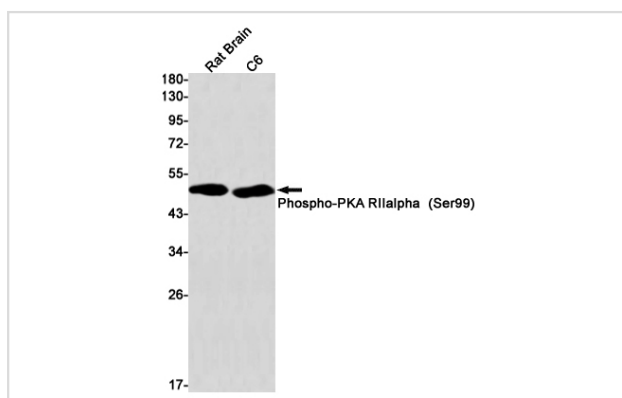
Description

Product Name	Phospho-PKA RII alpha (Ser99) Rabbit mAb
Host Species	Recombinant Rabbit
Clonality	Monoclonal antibody
Clone No.	S05-7G2
Isotype	Rabbit IgG
Purification	Affinity Purified
Applications	WB IHC
Species Reactivity	Human,Mouse,Rat
Immunogen Description	A synthetic phosphopeptide corresponding to residues surrounding Ser99 of human PKA R2
Conjugates	Unconjugated
Modification	Phosphorylated
Other Names	PKR2; PRKAR2
Accession No.	Swiss-Prot:P13861GenelD:5576
Uniprot	P13861
GenelD	5576
Calculated MW	Calculated MW: 46 kDa; Observed MW: 50 kDa
Concentration	0.3 mg/ml
Formulation	50mM Tris-Glycine(pH 7.4), 0.15M NaCl, 40% Glycerol, 0.01% Sodium azide and 0.05% BSA
Storage	Store at 4°C short term. Aliquot and store at -20°C long term. Avoid freeze/thaw cycles.

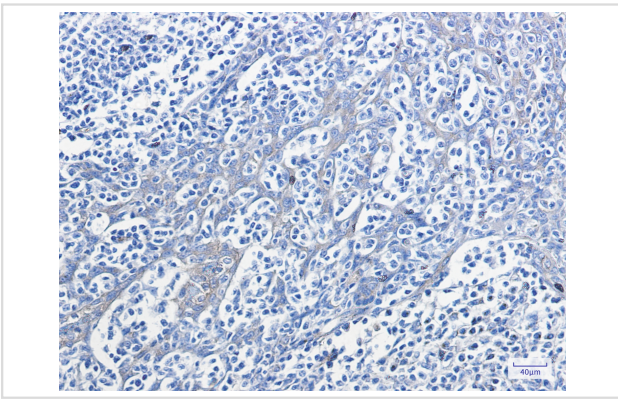
Application Details

WB: 1/1000; IHC: 1/100;

Images



Western blot detection of Phospho-PKA RIIalpha (Ser99) in Rat Brain, C6 cell lysates using Phospho-PKA RIIalpha (Ser99) Rabbit mAb (1:1000 diluted). Predicted band size: 46 kDa. Observed band size: 50 kDa.



Immunohistochemistry of PKA R2 (Phospho-Ser99) in paraffin-embedded Human tonsil using PKA R2 (Phospho-Ser99) Rabbit mAb at dilution 1/100

Background

Swiss-Prot Acc.P13861.Regulatory subunit of the cAMP-dependent protein kinases involved in cAMP signaling in cells. Type II regulatory chains mediate membrane association by binding to anchoring proteins, including the MAP2 kinase.SitesFeature keyPosition(s)Description

Note: This product is for in vitro research use only