

PKD1 Rabbit mAb

Catalog No: #52510

Package Size: #52510-1 50ul #52510-2 100ul

Orders: order@signalwayantibody.comSupport: tech@signalwayantibody.com

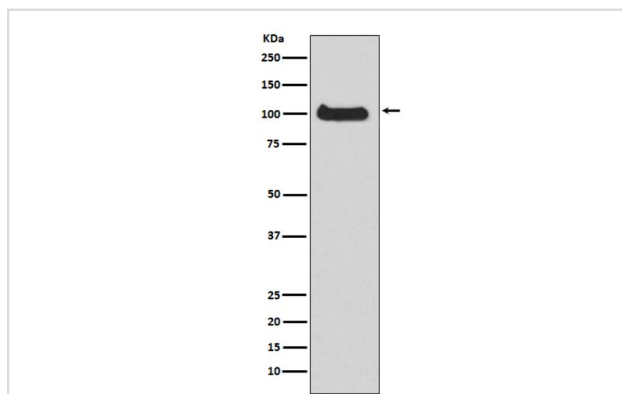
Description

Product Name	PKD1 Rabbit mAb
Clone No.	S05-4J5
Isotype	Rabbit IgG
Purification	Affinity-chromatography
Applications	WB
Species Reactivity	Human,Mouse,Rat
Immunogen Description	A synthesized peptide derived from human PKC mu
Conjugates	Unconjugated
Modification	Unmodification
Other Names	PKD; PKCM; CHDED; PRKCM; PKC-MU
Accession No.	Swiss-Prot:Q15139GeneID:5587
Uniprot	Q15139
GeneID	5587
Calculated MW	Calculated MW: 102 kDa; Observed MW: 102 kDa
Concentration	0.3 mg/ml
Formulation	Rabbit IgG in 10mM phosphate buffered saline , pH 7.4, 150mM sodium chloride, 0.05% BSA, 0.02% sodium azide and 50% glycerol.
Storage	Store at 4°C short term. Aliquot and store at -20°C long term. Avoid freeze/thaw cycles.

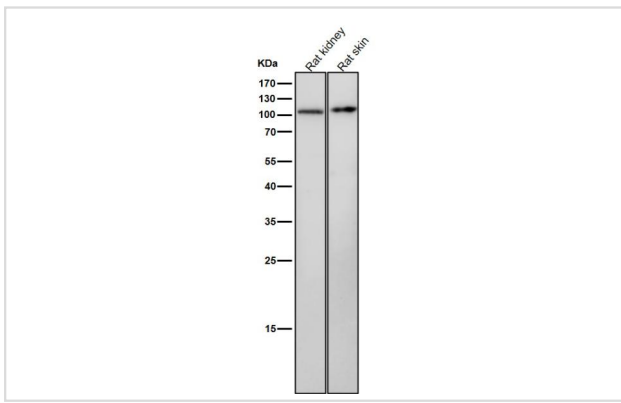
Application Details

WB 1:1000-1:2000

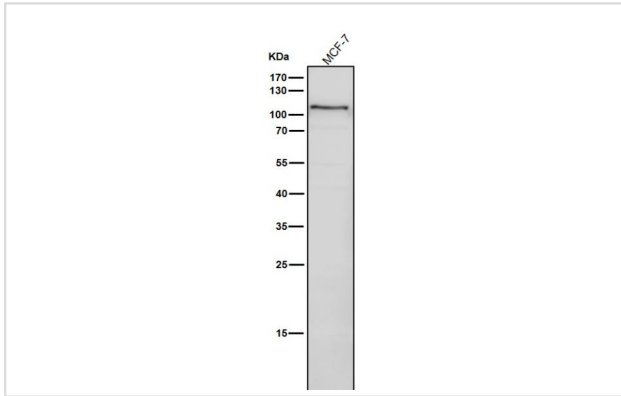
Images



Western blot analysis of PKC mu expression in HeLa cell lysate.



All lanes use the Antibody at 1:2K dilution for 1 hour at room temperature.



All lanes use the Antibody at 1:2K dilution for 1 hour at room temperature.

Background

Serine/threonine-protein kinase that converts transient diacylglycerol (DAG) signals into prolonged physiological effects downstream of PKC, and is involved in the regulation of MAPK8/JNK1 and Ras signaling, Golgi membrane integrity and trafficking, cell survival through NF-kappa-B activation, cell migration, cell differentiation by mediating HDAC7 nuclear export, cell proliferation via MAPK1/3 (ERK1/2) signaling, and plays a role in cardiac hypertrophy, VEGFA-induced angiogenesis, genotoxic-induced apoptosis and flagellin-stimulated inflammatory response

Note: This product is for in vitro research use only