

Placental Alkaline Phosphatase Rabbit mAb

Catalog No: #52512

Package Size: #52512-1 50ul #52512-2 100ul

Orders: order@signalwayantibody.com

Support: tech@signalwayantibody.com

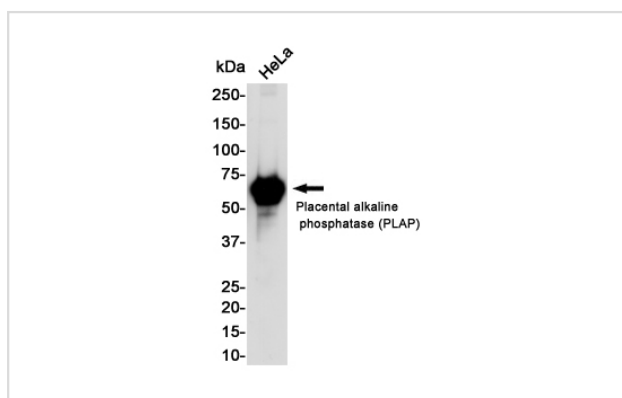
Description

Product Name	Placental Alkaline Phosphatase Rabbit mAb
Host Species	Recombinant Rabbit
Clonality	Monoclonal antibody
Clone No.	S01-813
Isotype	Rabbit IgG
Purification	Affinity Purified
Applications	WB
Species Reactivity	Human
Immunogen Description	A synthetic peptide of human Placental alkaline phosphatase (phospho LAP)
Conjugates	Unconjugated
Modification	Unmodification
Other Names	ALP; PALP; PLAP; PLAP-1
Accession No.	Swiss-Prot:P05187GenelD:250
Uniprot	P05187
GenelD	250
Calculated MW	Calculated MW: 58 kDa; Observed MW: 70 kDa
Concentration	0.3 mg/ml
Formulation	50mM Tris-Glycine(pH 7.4), 0.15M NaCl, 40% Glycerol, 0.01% Sodium azide and 0.05% BSA
Storage	Store at 4°C short term. Aliquot and store at -20°C long term. Avoid freeze/thaw cycles.

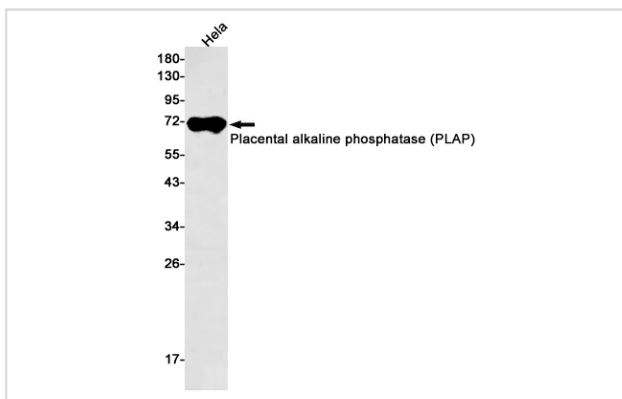
Application Details

WB: 1/2000

Images



Western blot detection of Placental alkaline phosphatase (phospho LAP) in HeLa cell lysates using Placental alkaline phosphatase (phospho LAP) Rabbit mAb(1:1000 diluted). Predicted band size: 58KDa. Observed band size: 70KDa.



Western blot detection of Placental alkaline phosphatase (PLAP) in HeLa cell lysates using Placental alkaline phosphatase (PLAP) Rabbit mAb(1:500 diluted). Predicted band size:58kDa.Observed band size:70kDa.

Background

Swiss-Prot Acc.P05187.MiscellaneousIn most mammals there are four different isozymes: placental, germ cell, intestinal and tissue non-specific (liver/bone/kidney).

Note: This product is for in vitro research use only