

PLSCR3 Rabbit mAb

Catalog No: #52514



Package Size: #52514-1 50ul #52514-2 100ul

Orders: order@signalwayantibody.com
Support: tech@signalwayantibody.com

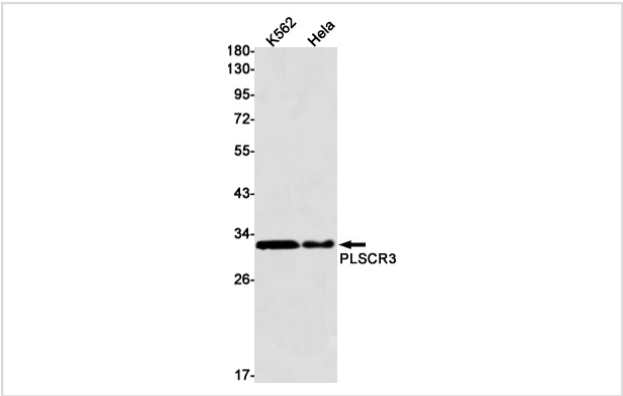
Description

Product Name	PLSCR3 Rabbit mAb
Host Species	Recombinant Rabbit
Clonality	Monoclonal antibody
Clone No.	S02-1B9
Isotype	Rabbit IgG
Purification	Affinity Purified
Applications	WB
Species Reactivity	Human,Mouse,Rat
Immunogen Description	A synthetic peptide of human PLSCR3
Conjugates	Unconjugated
Modification	Unmodification
Other Names	Phospholipid scramblase 3;PL scramblase 3;
Accession No.	Swiss-Prot:Q9NRY6GeneID:57048
Uniprot	Q9NRY6
GeneID	57048
Calculated MW	Calculated MW: 32 kDa; Observed MW: 32 kDa
Concentration	0.3 mg/ml
Formulation	50mM Tris-Glycine(pH 7.4), 0.15M NaCl, 40% Glycerol, 0.01% Sodium azide and 0.05% BSA
Storage	Store at 4°C short term. Aliquot and store at -20°C long term. Avoid freeze/thaw cycles.

Application Details

WB: 1/1000-1/5000

Images



Western blot detection of PLSCR3 in K562,HeLa cell lysates using PLSCR3 Rabbit mAb(1:1000 diluted).Predicted band size:32kDa.Observed band size:32kDa.

Background

Swiss-Prot Acc.Q9NRY6. May mediate accelerated ATP-independent bidirectional transbilayer migration of phospholipids upon binding calcium ions that results in a loss of phospholipid asymmetry in the plasma membrane. May play a central role in the initiation of fibrin clot formation, in the activation of mast cells and in the recognition of apoptotic and injured cells by the reticuloendothelial system. Seems to play a role in apoptosis, through translocation of cardiolipin from the inner to the outer mitochondrial membrane which promotes BID recruitment and enhances tBid-induced mitochondrial damages.

Note: This product is for in vitro research use only