

PMCA1 Rabbit mAb

Catalog No: #52515

Package Size: #52515-1 50ul #52515-2 100ul

Orders: order@signalwayantibody.com

Support: tech@signalwayantibody.com

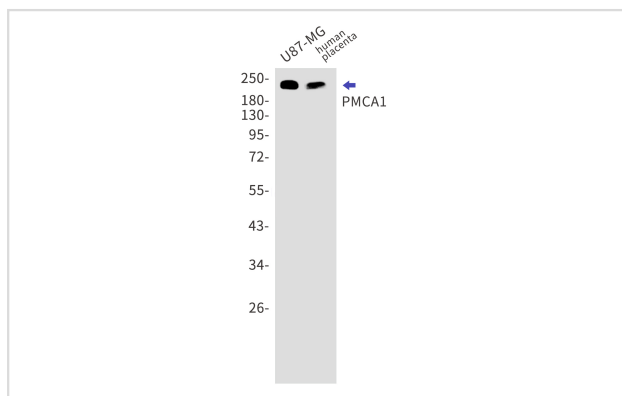
Description

Product Name	PMCA1 Rabbit mAb
Host Species	Recombinant Rabbit
Clonality	Monoclonal antibody
Clone No.	S02-8C5
Isotype	Rabbit IgG
Purification	Affinity Purified
Applications	WB
Species Reactivity	Human,Mouse,Rat
Immunogen Description	A synthetic peptide of human PMCA1
Conjugates	Unconjugated
Modification	Unmodification
Other Names	PMCA1; PMCA1kb
Accession No.	Swiss-Prot:P20020GenelD:490
Uniprot	P20020
GenelD	490
Calculated MW	Calculated MW: 139 kDa; Observed MW: 130-250 kDa
Concentration	0.3 mg/ml
Formulation	50mM Tris-Glycine(pH 7.4), 0.15M NaCl, 40% Glycerol, 0.01% Sodium azide and 0.05% BSA
Storage	Store at 4°C short term. Aliquot and store at -20°C long term. Avoid freeze/thaw cycles.

Application Details

WB: 1/1000-1/2000;

Images



Western blot detection of PMCA1 in U87-MG, human placenta lysates using PMCA1 antibody. Predicted band size: 139kDa. Observed band size: 130-250kDa.

Background

Swiss-Prot Acc.P20020.This magnesium-dependent enzyme catalyzes the hydrolysis of ATP coupled with the transport of calcium out of the cell.

Note: This product is for in vitro research use only