

PP2A alpha/beta Rabbit mAb

Catalog No: #52518

Package Size: #52518-1 50ul #52518-2 100ul

Orders: order@signalwayantibody.com

Support: tech@signalwayantibody.com

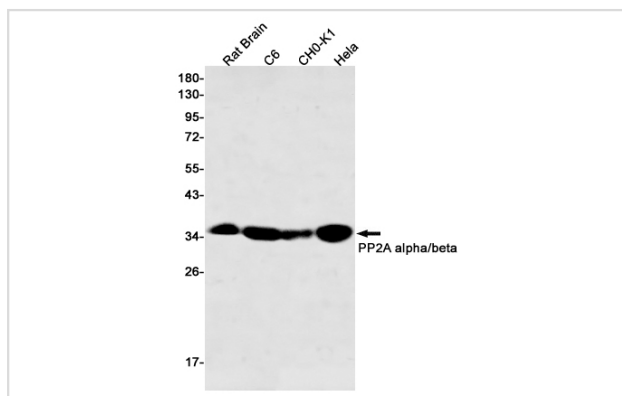
Description

Product Name	PP2A alpha/beta Rabbit mAb
Host Species	Recombinant Rabbit
Clonality	Monoclonal antibody
Clone No.	S04-4G4
Isotype	Rabbit IgG
Purification	Affinity Purified
Applications	WB IHC IF
Species Reactivity	Human,Mouse,Rat
Immunogen Description	A synthetic peptide of human PP2A alpha
Conjugates	Unconjugated
Modification	Unmodification
Other Names	RP-C; PP2Ac; PP2CA; PP2Calpha
Accession No.	Swiss-Prot:P67775GenelD:5515
Uniprot	P67775
GenelD	5515
Calculated MW	Calculated MW: 36 kDa; Observed MW: 36 kDa
Concentration	0.3 mg/ml
Formulation	50mM Tris-Glycine(pH 7.4), 0.15M NaCl, 40% Glycerol, 0.01% Sodium azide and 0.05% BSA
Storage	Store at 4°C short term. Aliquot and store at -20°C long term. Avoid freeze/thaw cycles.

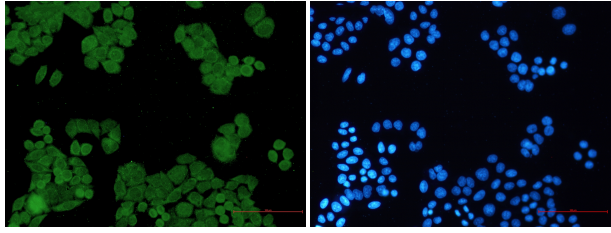
Application Details

WB: 1/1000-1/2000; IHC: 1/50-1/200; ICC/IF: 1/20;

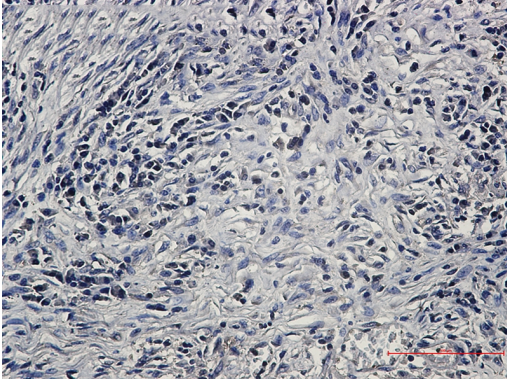
Images



Western blot detection of PP2A alpha/beta in Rat Brain, C6, CHO-K1, HeLa cell lysates using PP2A alpha/beta Rabbit mAb (1:500 diluted). Predicted band size: 36 kDa. Observed band size: 36 kDa.



Immunocytochemistry of PP2A alpha/beta (green) in HeLa using PP2A alpha/beta Rabbit mAb at dilution 1/5, and DAPI(blue)



Immunohistochemistry of PP2A alpha/beta in paraffin-embedded Human lung cancer tissue using PP2A alpha/beta Rabbit mAb at dilution 1/50

Background

Swiss-Prot Acc.P67775.PP2A is the major phosphatase for microtubule-associated proteins (MAPs). PP2A can modulate the activity of phosphorylase B kinase casein kinase 2, mitogen-stimulated S6 kinase, and MAP-2 kinase. Cooperates with SGO2 to protect centromeric cohesin from separase-mediated cleavage in oocytes specifically during meiosis I. Can dephosphorylate SV40 large T antigen and p53/TP53. Activates RAF1 by dephosphorylating it at Ser-259.

Note: This product is for in vitro research use only