

Prostaglandin E Synthase Rabbit mAb

Catalog No: #52526

Package Size: #52526-1 50ul #52526-2 100ul

Orders: order@signalwayantibody.com

Support: tech@signalwayantibody.com

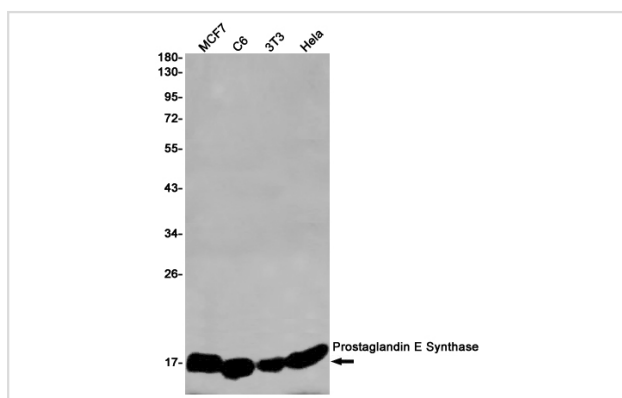
Description

Product Name	Prostaglandin E Synthase Rabbit mAb
Host Species	Recombinant Rabbit
Clonality	Monoclonal antibody
Clone No.	S03-8E7
Isotype	Rabbit IgG
Purification	Affinity Purified
Applications	WB
Species Reactivity	Human,Mouse,Rat
Immunogen Description	A synthetic peptide of human Prostaglandin E Synthase
Conjugates	Unconjugated
Modification	Unmodification
Other Names	PGES; MPGES; PIG12; PP102; PP1294; MGST-IV; MGST1L1; TP53I12; mPGES-1; MGST1-L1
Accession No.	Swiss-Prot:O14684GeneID:9536
Uniprot	O14684
GeneID	9536
Calculated MW	Calculated MW: 17 kDa; Observed MW: 17 kDa
Concentration	0.3 mg/ml
Formulation	50mM Tris-Glycine(pH 7.4), 0.15M NaCl, 40% Glycerol, 0.01% Sodium azide and 0.05% BSA
Storage	Store at 4°C short term. Aliquot and store at -20°C long term. Avoid freeze/thaw cycles.

Application Details

WB: 1/1000

Images



Western blot detection of Prostaglandin E Synthase in MCF7,C6,3T3,HeLa cell lysates using Prostaglandin E Synthase Rabbit mAb(1:1000 diluted).Predicted band size:17KDa.Observed band size:17KDa.

Background

Swiss-Prot Acc.O14684.Catalyzes the oxidoreduction of prostaglandin endoperoxide H2 (PGH2) to prostaglandin E2 (PGE2).

Note: This product is for in vitro research use only