

PROX1 Rabbit mAb

Catalog No: #52531

Package Size: #52531-1 50ul #52531-2 100ul

Orders: order@signalwayantibody.com

Support: tech@signalwayantibody.com

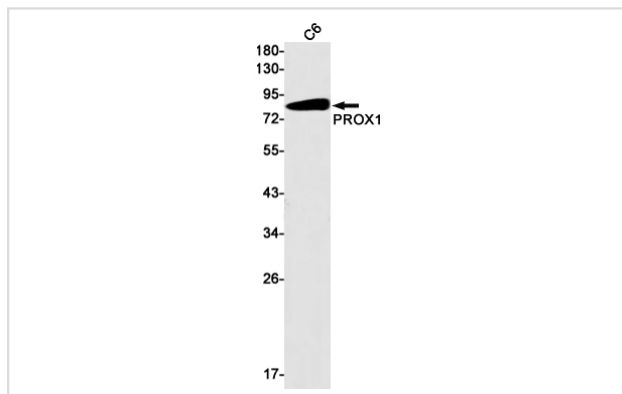
Description

Product Name	PROX1 Rabbit mAb
Host Species	Recombinant Rabbit
Clonality	Monoclonal antibody
Clone No.	S02-8H5
Isotype	Rabbit IgG
Purification	Affinity Purified
Applications	WB
Species Reactivity	Human, Rat
Immunogen Description	A synthetic peptide of human PROX1
Conjugates	Unconjugated
Modification	Unmodification
Other Names	Homeobox prospero like protein PROX1; Prospero homeobox protein 1; prospero-related homeobox gene 1; PROX1;
Accession No.	Swiss-Prot:Q92786GeneID:5629
Uniprot	Q92786
GeneID	5629
Calculated MW	Calculated MW: 83 kDa; Observed MW: 85 kDa
Concentration	0.3 mg/ml
Formulation	50mM Tris-Glycine(pH 7.4), 0.15M NaCl, 40% Glycerol, 0.01% Sodium azide and 0.05% BSA
Storage	Store at 4°C short term. Aliquot and store at -20°C long term. Avoid freeze/thaw cycles.

Application Details

WB: 1/1000-1/5000

Images



Western blot detection of PROX1 in C6 cell lysates using PROX1 Rabbit mAb(1:1000 diluted). Predicted band size:83kDa.Observed band size:85kDa.

Background

Swiss-Prot Acc.Q92786. Transcription factor involved in developmental processes such as cell fate determination, gene transcriptional regulation and progenitor cell regulation in a number of organs. Plays a critical role in embryonic development and functions as a key regulatory protein in neurogenesis and the development of the heart, eye lens, liver, pancreas and the lymphatic system. Involved in the regulation of the circadian rhythm. Represses: transcription of the retinoid-related orphan receptor ROR γ , transcriptional activator activity of RORA and ROR γ and the expression of RORA/ γ -target genes including core clock components: ARNTL/BMAL1, NPAS2 and CRY1 and metabolic genes: AVPR1A and ELOVL3.

Note: This product is for in vitro research use only