

PSMB10 Rabbit mAb

Catalog No: #52534

Package Size: #52534-1 50ul #52534-2 100ul

Orders: order@signalwayantibody.com

Support: tech@signalwayantibody.com

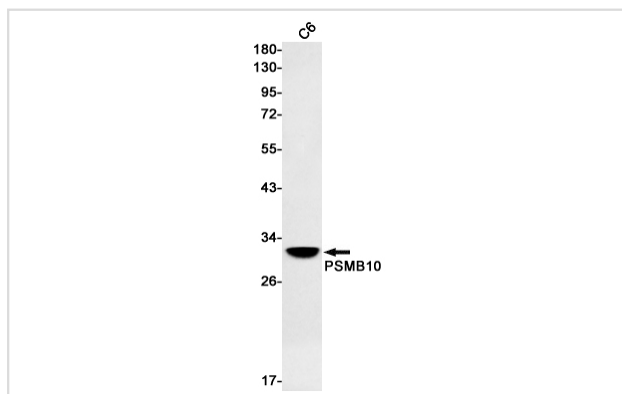
Description

Product Name	PSMB10 Rabbit mAb
Host Species	Recombinant Rabbit
Clone No.	S06-6C5
Isotype	Rabbit IgG
Purification	Affinity Purified
Applications	WB
Species Reactivity	Human,Rat
Immunogen Description	A synthetic peptide of human PSMB10
Conjugates	Unconjugated
Modification	Unmodification
Other Names	LMP10; MECL1; beta2i
Accession No.	Swiss-Prot:P40306GenelD:5699
Uniprot	P40306
GeneID	5699
Calculated MW	Calculated MW: 29 kDa; Observed MW: 29 kDa
Concentration	0.3 mg/ml
Formulation	50mM Tris-Glycine(pH 7.4), 0.15M NaCl, 40% Glycerol, 0.01% Sodium azide and 0.05% BSA
Storage	Store at 4°C short term. Aliquot and store at -20°C long term. Avoid freeze/thaw cycles.

Application Details

WB: 1/1000

Images



Western blot detection of PSMB10 in C6 cell lysates using PSMB10 Rabbit mAb(1:500 diluted).Predicted band size:29kDa.Observed band size:29kDa.

Background

Swiss-Prot Acc.P40306.The proteasome is a multicatalytic proteinase complex which is characterized by its ability to cleave peptides with Arg, Phe,

Tyr, Leu, and Glu adjacent to the leaving group at neutral or slightly basic pH. The proteasome has an ATP-dependent proteolytic activity. This subunit is involved in antigen processing to generate class I binding peptides.

Note: This product is for in vitro research use only