

SPI1 Rabbit mAb

Catalog No: #52535

Package Size: #52535-1 50ul #52535-2 100ul

Orders: order@signalwayantibody.com

Support: tech@signalwayantibody.com

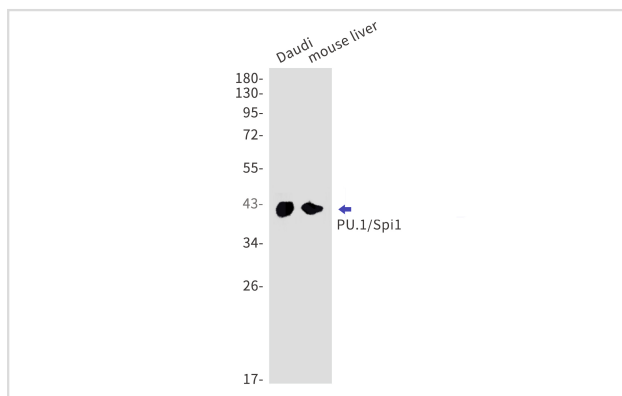
Description

Product Name	SPI1 Rabbit mAb
Host Species	Recombinant Rabbit
Clonality	Monoclonal antibody
Clone No.	S07-4D3
Isotype	Rabbit IgG
Purification	Affinity Purified
Applications	WB
Species Reactivity	Human
Immunogen Description	A synthetic peptide of human PU.1/Spi1
Conjugates	Unconjugated
Modification	Unmodification
Other Names	OF; PU.1; SFPI1; SPI-1; SPI-A
Accession No.	Swiss-Prot:P17947GenelD:6688
Uniprot	P17947
GenelD	6688
Calculated MW	Calculated MW: 31 kDa; Observed MW: 42 kDa
Concentration	0.3 mg/ml
Formulation	50mM Tris-Glycine(pH 7.4), 0.15M NaCl, 40% Glycerol, 0.01% Sodium azide and 0.05% BSA
Storage	Store at 4°C short term. Aliquot and store at -20°C long term. Avoid freeze/thaw cycles.

Application Details

WB: 1/1000-1/2000;

Images



Western blot detection of PU.1/Spi1 in Daudi mouse liver cell lysates using PU.1/Spi1 Rabbit mAb(1:1000 diluted). Predicted band size:31kDa.Observed band size:42kDa.

Background

Swiss-Prot Acc.P17947.Binds to the PU-box, a purine-rich DNA sequence (5'-GAGGAA-3') that can act as a lymphoid-specific enhancer. This protein is a transcriptional activator that may be specifically involved in the differentiation or activation of macrophages or B-cells. Also binds RNA and may modulate pre-mRNA splicing .

Note: This product is for in vitro research use only