

PWP1 Rabbit mAb

Catalog No: #52536

Package Size: #52536-1 50ul #52536-2 100ul

Orders: order@signalwayantibody.com

Support: tech@signalwayantibody.com

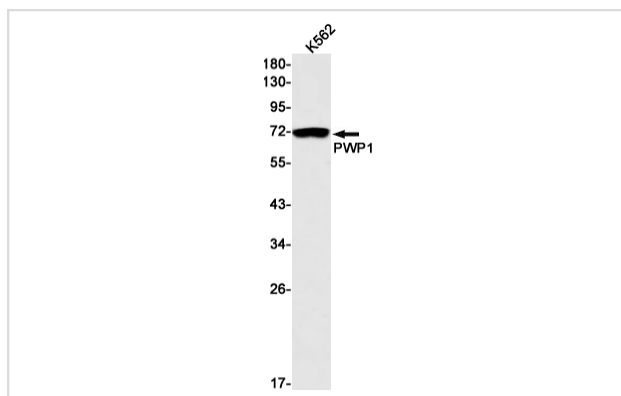
Description

Product Name	PWP1 Rabbit mAb
Host Species	Recombinant Rabbit
Clonality	Monoclonal antibody
Clone No.	S01-7B5
Isotype	Rabbit IgG
Purification	Affinity Purified
Applications	WB
Species Reactivity	Human,Mouse,Rat
Immunogen Description	A synthetic peptide of human PWP1
Conjugates	Unconjugated
Modification	Unmodification
Other Names	IEF-SSP-9502
Accession No.	Swiss-Prot:Q13610GeneID:11137
Uniprot	Q13610
GeneID	11137
Calculated MW	Calculated MW: 56 kDa; Observed MW: 75 kDa
Concentration	0.3 mg/ml
Formulation	50mM Tris-Glycine(pH 7.4), 0.15M NaCl, 40% Glycerol, 0.01% Sodium azide and 0.05% BSA
Storage	Store at 4°C short term. Aliquot and store at -20°C long term. Avoid freeze/thaw cycles.

Application Details

WB: 1/1000-1/2000;

Images



Western blot detection of PWP1 in K562 cell lysates using PWP1 Rabbit mAb(1:1000 diluted). Predicted band size:56kDa.Observed band size:75kDa.

Background

Swiss-Prot Acc.Q13610.Chromatin-associated factor that regulates transcription (PubMed:29065309). Regulates Pol I-mediated rRNA biogenesis and, probably, Pol III-mediated transcription (PubMed:29065309). Regulates the epigenetic status of rDNA (PubMed:29065309).

Note: This product is for in vitro research use only