

RASSF2 Rabbit mAb

Catalog No: #52546

Package Size: #52546-1 50ul #52546-2 100ul

Orders: order@signalwayantibody.com

Support: tech@signalwayantibody.com

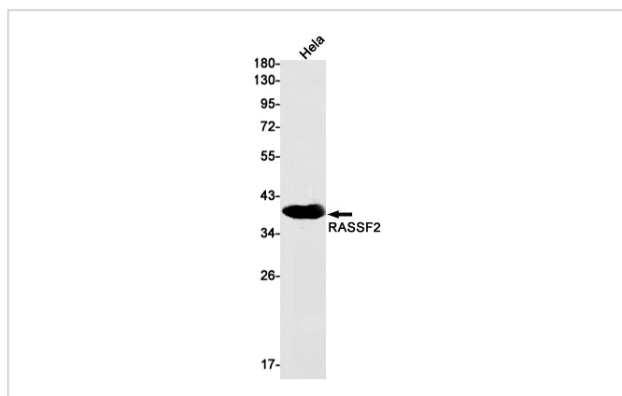
Description

Product Name	RASSF2 Rabbit mAb
Host Species	Recombinant Rabbit
Clonality	Monoclonal antibody
Clone No.	S06-2H4
Isotype	Rabbit IgG
Purification	Affinity Purified
Applications	WB
Species Reactivity	Human
Immunogen Description	A synthetic peptide of human RASSF2
Conjugates	Unconjugated
Modification	Unmodification
Other Names	CENP-34; RASFADIN
Accession No.	Swiss-Prot:P50749GenelD:9770
Uniprot	P50749
GenelD	9770
Calculated MW	Calculated MW: 38 kDa; Observed MW: 38 kDa
Concentration	0.3 mg/ml
Formulation	50mM Tris-Glycine(pH 7.4), 0.15M NaCl, 40% Glycerol, 0.01% Sodium azide and 0.05% BSA
Storage	Store at 4°C short term. Aliquot and store at -20°C long term. Avoid freeze/thaw cycles.

Application Details

WB: 1/1000-1/5000

Images



Western blot detection of RASSF2 in HeLa cell lysates using RASSF2 Rabbit mAb(1:1000 diluted). Predicted band size:38kDa.Observed band size:38kDa.

Background

Swiss-Prot Acc.P50749.Potential tumor suppressor. Acts as a KRAS-specific effector protein. May promote apoptosis and cell cycle arrest. Stabilizes STK3/MST2 by protecting it from proteasomal degradation.

Note: This product is for in vitro research use only