

RhoGDI Rabbit mAb

Catalog No: #52554

Package Size: #52554-1 50ul #52554-2 100ul

Orders: order@signalwayantibody.com

Support: tech@signalwayantibody.com

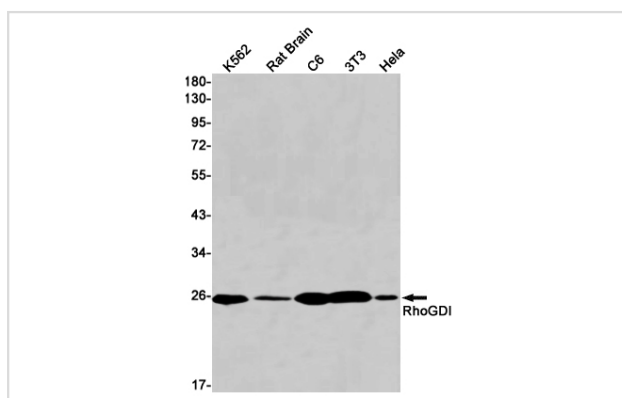
Description

Product Name	RhoGDI Rabbit mAb
Host Species	Recombinant Rabbit
Clonality	Monoclonal antibody
Clone No.	S05-6F6
Isotype	Rabbit IgG
Purification	Affinity Purified
Applications	WB
Species Reactivity	Human,Mouse,Rat
Immunogen Description	A synthetic peptide of human RhoGDI
Conjugates	Unconjugated
Modification	Unmodification
Other Names	GDIA1; NPHS8; RHOGDI; RHOGDI-1; HEL-S-47e
Accession No.	Swiss-Prot:P52565GenelD:396
Uniprot	P52565
GeneID	396
Calculated MW	Calculated MW: 23 kDa; Observed MW: 26 kDa
Concentration	0.3 mg/ml
Formulation	50mM Tris-Glycine(pH 7.4), 0.15M NaCl, 40% Glycerol, 0.01% Sodium azide and 0.05% BSA
Storage	Store at 4°C short term. Aliquot and store at -20°C long term. Avoid freeze/thaw cycles.

Application Details

WB: 1/1000

Images



Western blot detection of RhoGDI in K562,Rat Brain,C6,3T3,Hela cell lysates using RhoGDI Rabbit mAb(1:1000 diluted).Predicted band size:23kDa.Observed band size:26kDa.

Background

Swiss-Prot Acc.P52565.Controls Rho proteins homeostasis. Regulates the GDP/GTP exchange reaction of the Rho proteins by inhibiting the dissociation of GDP from them, and the subsequent binding of GTP to them. Retains Rho proteins such as CDC42, RAC1 and RHOA in an inactive cytosolic pool, regulating their stability and protecting them from degradation. Actively involved in the recycling and distribution of activated Rho GTPases in the cell, mediates extraction from membranes of both inactive and activated molecules due its exceptionally high affinity for prenylated forms. Through the modulation of Rho proteins, may play a role in cell motility regulation. In glioma cells, inhibits cell migration and invasion by mediating the signals of SEMA5A and PLXNB3 that lead to inactivation of RAC1.

Note: This product is for in vitro research use only