

RPL10A Rabbit mAb

Catalog No: #52559

Package Size: #52559-1 50ul #52559-2 100ul

Orders: order@signalwayantibody.com

Support: tech@signalwayantibody.com

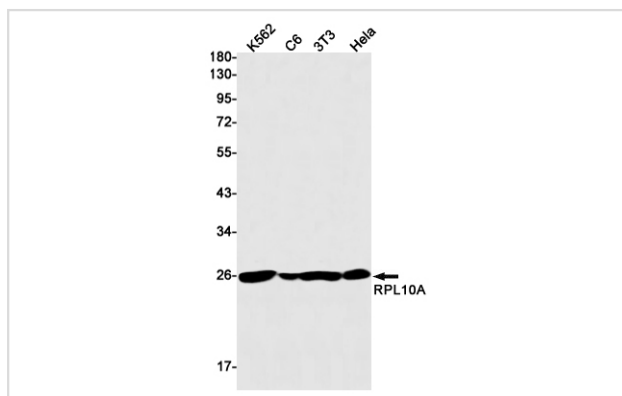
Description

Product Name	RPL10A Rabbit mAb
Host Species	Recombinant Rabbit
Clonality	Monoclonal antibody
Clone No.	S08-9H8
Isotype	Rabbit IgG
Purification	Affinity Purified
Applications	WB
Species Reactivity	Human,Mouse,Rat
Immunogen Description	Recombinant protein of human RPL10A
Conjugates	Unconjugated
Modification	Unmodification
Other Names	L10A; CSA19; NEDD6; Csa-19
Accession No.	Swiss-Prot:P62906GenelD:4736
Uniprot	P62906
GenelD	4736
Calculated MW	Calculated MW: 25 kDa; Observed MW: 25 kDa
Concentration	0.3 mg/ml
Formulation	50mM Tris-Glycine(pH 7.4), 0.15M NaCl, 40% Glycerol, 0.01% Sodium azide and 0.05% BSA
Storage	Store at 4°C short term. Aliquot and store at -20°C long term. Avoid freeze/thaw cycles.

Application Details

WB: 1/1000-1/5000;

Images



Western blot detection of RPL10A in K562,C6,3T3,Hela cell lysates using RPL10A Rabbit mAb(1:1000 diluted).Predicted band size:25kDa.Observed band size:25kDa.

Background

Swiss-Prot Acc.P62906.Component of the large ribosomal subunit.

Note: This product is for in vitro research use only