

RRAS Rabbit mAb

Catalog No: #52560

Package Size: #52560-1 50ul #52560-2 100ul

Orders: order@signalwayantibody.com

Support: tech@signalwayantibody.com

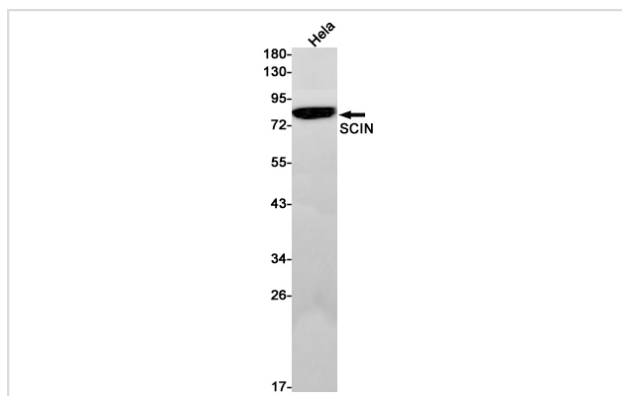
Description

Product Name	RRAS Rabbit mAb
Host Species	Recombinant Rabbit
Clonality	Monoclonal antibody
Clone No.	S06-7A2
Isotype	Rabbit IgG
Purification	Affinity Purified
Applications	WB
Species Reactivity	Human
Immunogen Description	A synthetic peptide of human RRAS
Conjugates	Unconjugated
Modification	Unmodification
Other Names	p23
Accession No.	Swiss-Prot:P10301GenelD:6237
Uniprot	P10301
GenelD	6237
Calculated MW	Calculated MW: 24 kDa; Observed MW: 24 kDa
Concentration	0.3 mg/ml
Formulation	50mM Tris-Glycine(pH 7.4), 0.15M NaCl, 40% Glycerol, 0.01% Sodium azide and 0.05% BSA
Storage	Store at 4°C short term. Aliquot and store at -20°C long term. Avoid freeze/thaw cycles.

Application Details

WB: 1/1000;

Images



Western blot detection of RRAS in HeLa cell lysates using RRAS Rabbit mAb(1:1000 diluted). Predicted band size:24kDa. Observed band size:24kDa.

Background

Swiss-Prot Acc.P10301.Regulates the organization of the actin cytoskeleton (PubMed:16537651, PubMed:18270267). With OSPBL3, modulates integrin beta-1 (ITGB1) activity (PubMed:18270267).

Note: This product is for in vitro research use only