

RRM2 Rabbit mAb

Catalog No: #52561

Package Size: #52561-1 50ul #52561-2 100ul

Orders: order@signalwayantibody.com

Support: tech@signalwayantibody.com

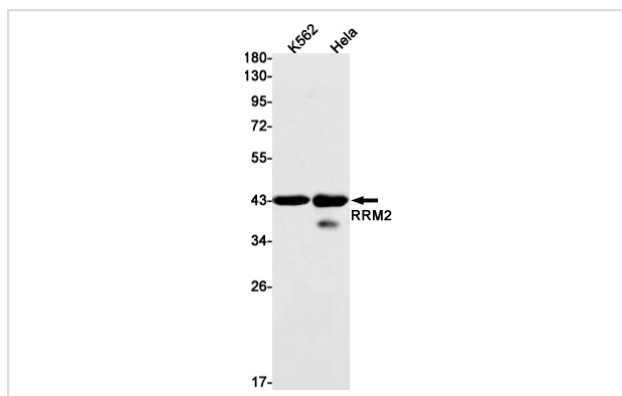
Description

| | |
|-----------------------|--|
| Product Name | RRM2 Rabbit mAb |
| Host Species | Recombinant Rabbit |
| Clonality | Monoclonal antibody |
| Clone No. | S09-4G8 |
| Isotype | Rabbit IgG |
| Purification | Affinity Purified |
| Applications | WB |
| Species Reactivity | Human |
| Immunogen Description | Recombinant protein of human RRM2 |
| Conjugates | Unconjugated |
| Modification | Unmodification |
| Other Names | R2; RR2; RR2M |
| Accession No. | Swiss-Prot:P31350GenelD:6241 |
| Uniprot | P31350 |
| GenelD | 6241 |
| Calculated MW | Calculated MW: 45 kDa; Observed MW: 45 kDa |
| Concentration | 0.3 mg/ml |
| Formulation | 50mM Tris-Glycine(pH 7.4), 0.15M NaCl, 40% Glycerol, 0.01% Sodium azide and 0.05% BSA |
| Storage | Store at 4°C short term. Aliquot and store at -20°C long term. Avoid freeze/thaw cycles. |

Application Details

WB: 1/1000;

Images



Western blot detection of RRM2 in K562, HeLa cell lysates using RRM2 Rabbit mAb(1:1000 diluted). Predicted band size: 45kDa. Observed band size: 45kDa.

Background

Swiss-Prot Acc.P31350.Provides the precursors necessary for DNA synthesis. Catalyzes the biosynthesis of deoxyribonucleotides from the corresponding ribonucleotides. Inhibits Wnt signaling.MiscellaneousTwo distinct regulatory sites have been defined: the specificity site, which controls substrate specificity, and the activity site which regulates overall catalytic activity. A substrate-binding catalytic site, located on M1, is formed only in the presence of the second subunit M2.

Note: This product is for in vitro research use only