

S100A4 Rabbit mAb

Catalog No: #52564

Package Size: #52564-1 50ul #52564-2 100ul

Orders: order@signalwayantibody.com

Support: tech@signalwayantibody.com

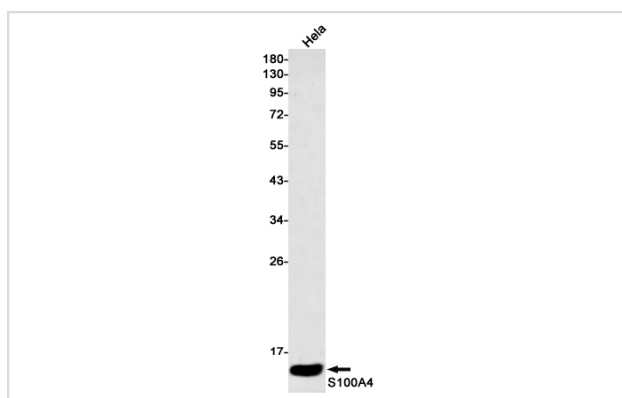
Description

Product Name	S100A4 Rabbit mAb
Host Species	Recombinant Rabbit
Clonality	Monoclonal antibody
Clone No.	S01-7H1
Isotype	Rabbit IgG
Purification	Affinity Purified
Applications	WB IHC IF
Species Reactivity	Human
Immunogen Description	A synthetic peptide of human S100A4
Conjugates	Unconjugated
Modification	Unmodification
Other Names	42A; 18A2; CAPL; FSP1; MTS1; P9KA; PEL98
Accession No.	Swiss-Prot:P26447GenelD:6275
Uniprot	P26447
GenelD	6275
Calculated MW	Calculated MW: 12 kDa; Observed MW: 12 kDa
Concentration	0.3 mg/ml
Formulation	50mM Tris-Glycine(pH 7.4), 0.15M NaCl, 40% Glycerol, 0.01% Sodium azide and 0.05% BSA
Storage	Store at 4°C short term. Aliquot and store at -20°C long term. Avoid freeze/thaw cycles.

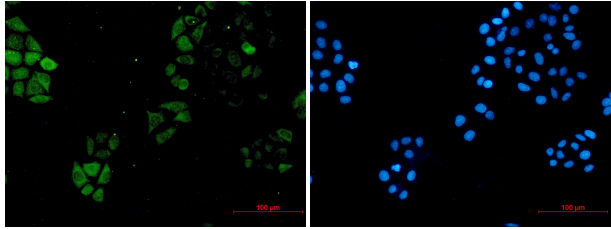
Application Details

WB: 1/1000-1/5000; IHC: 1/50-1/200; ICC/IF: 1/20-1/50;

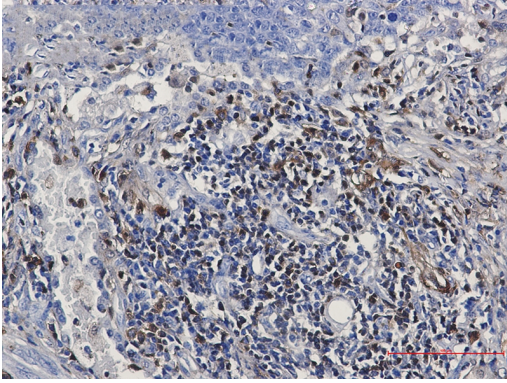
Images



Western blot detection of S100A4 in HeLa cell lysates using S100A4 Rabbit mAb(1:500 diluted).Predicted band size:12kDa.Observed band size:12kDa.



Immunocytochemistry of S1A4 (green) in hela using S1A4 Rabbit mAb at dilution 1/5, and DAPI(blue)



Immunohistochemistry of S100A4 in paraffin-embedded Human lung cancer tissue using S100A4 Rabbit mAb at dilution 1/50

Background

Swiss-Prot Acc.P26447.RegionsFeature keyPosition(s)Description

Note: This product is for in vitro research use only