

## SCIN Rabbit mAb

Catalog No: #52567

Package Size: #52567-1 50ul #52567-2 100ul

Orders: [order@signalwayantibody.com](mailto:order@signalwayantibody.com)Support: [tech@signalwayantibody.com](mailto:tech@signalwayantibody.com)

## Description

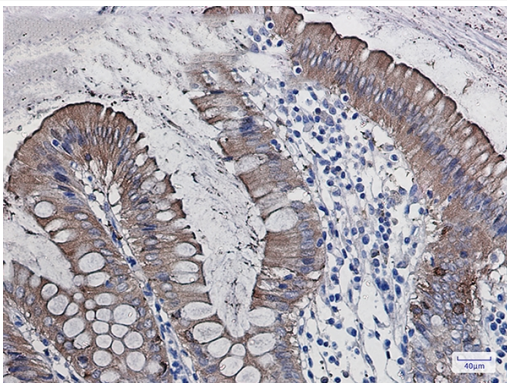
Product Name	SCIN Rabbit mAb
Clone No.	S07-6G2
Isotype	Rabbit IgG
Purification	Affinity-chromatography
Applications	WB IHC
Species Reactivity	Human,Mouse,Rat
Immunogen Description	A synthesized peptide derived from human Scinderin
Conjugates	Unconjugated
Modification	Unmodification
Other Names	Scinderin
Accession No.	Swiss-Prot:Q9Y6U3GeneID:85477
Uniprot	Q9Y6U3
GeneID	85477
Calculated MW	Calculated MW: 80 kDa; Observed MW: 80 kDa
Concentration	0.6 mg/ml
Formulation	Rabbit IgG in 10mM phosphate buffered saline , pH 7.4, 150mM sodium chloride, 0.05% BSA, 0.02% sodium azide and 50% glycerol.
Storage	Store at 4°C short term. Aliquot and store at -20°C long term. Avoid freeze/thaw cycles.

## Application Details

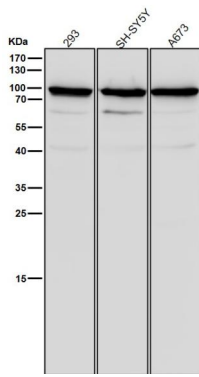
WB 1:1000-1:2000

IHC 1:100-1:200

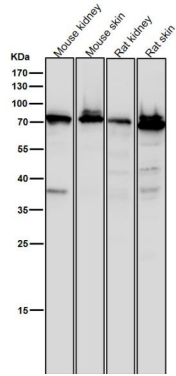
## Images



Immunohistochemistry of SCIN in paraffin-embedded Human colon cancer tissue using SCIN Rabbit mAb at dilution 1/50



All lanes use the Antibody at 1:1K dilution for 1 hour at room temperature.



All lanes use the Antibody at 1:1K dilution for 1 hour at room temperature.

## Background

Ca<sup>2+</sup>-dependent actin filament-severing protein that has a regulatory function in exocytosis by affecting the organization of the microfilament network underneath the plasma membrane. Severing activity is inhibited by phosphatidylinositol 4,5-bis-phosphate. In vitro, also has barbed end capping and nucleating activities in the presence of Ca<sup>2+</sup>. Required for megakaryocyte differentiation, maturation, polyploidization and apoptosis with the release of platelet-like particles.

Note: This product is for in vitro research use only